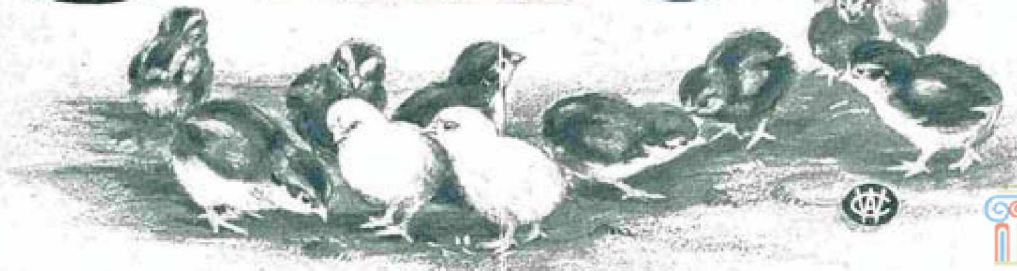
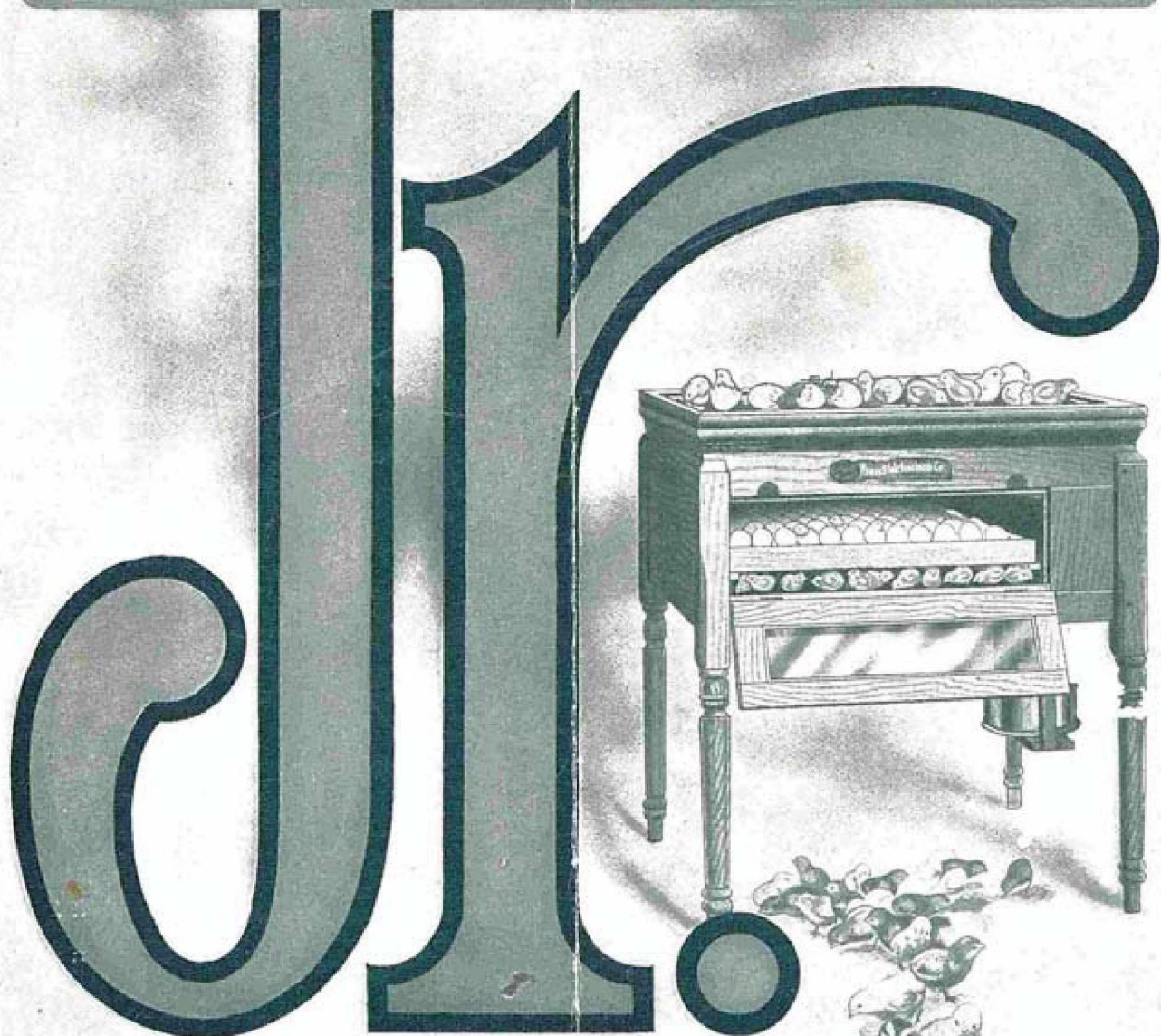
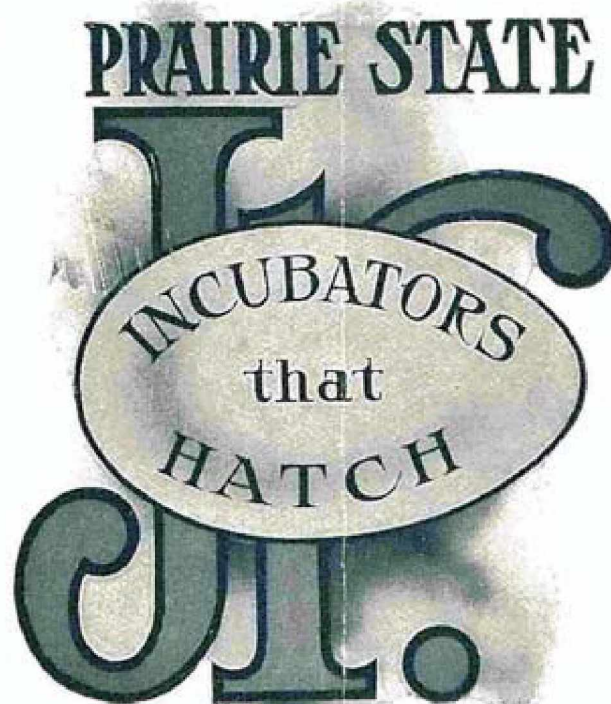


# PRAIRIE STATE





**Prairie State Incubator Co.**  
HOMER CITY, PENNSYLVANIA



MANUFACTURERS OF  
**Prairie State Incubators and Brooders,  
Heating Apparatus for Brooder  
Houses, Universal Hovers**

AND A FULL LINE OF POULTRY-HOUSE FIXTURES



ULTIMHEAT®  
UNIVERSITY MUSEUM

# INTRODUCTION



THE first essential to successful poultry-raising is the hatching of strong, healthy, vigorous chicks—chicks that will come into life not dwarfed, deformed, weak or stunted, but robust, with a hardy constitution capable of carrying them through the first weeks of their very precarious existence.

Many successful methods have been advanced for accomplishing this desired result by artificial incubation, which is as old as history itself. Still there are a great many farmers and not a few poultry-raisers who continue to employ the "old hen" as a hatcher, conscientiously believing that her way can not be improved upon.

Science, however, has been busy devising machines and bettering means for hatching chickens, not particularly to improve upon nature's way, but to accomplish nature's work easier, surer and in numbers that are practically impossible by the old hen method. It is not necessary to recount here how well science has succeeded in this undertaking; almost every man, woman and child knows what the modern incubator has done for the poultry industry.

The PRAIRIE STATE has long been recognized as a most valuable, money-making aid to the poultryman. In fact, it has practically revolutionized the manner of conducting his business. The constantly growing demand for more eggs and more market fowls means that the old, slow way of hatching must no longer be depended upon. And experience has proven that this field offers quick reward to those who employ improved appliances and methods. They thereby increase their output, lessen the cost of production, better the product and reduce the labor.

The successful business, in any line, is always a progressive business. This rule applies with especial force to the business of the poultryman. The successful poultryman is progressive and adopts improved methods without question when it has been demonstrated that they are improvements. He accepts changing conditions and turns them to his own profit and is thereby a benefactor to the business as well as to himself. The wise farmer and poultry-raiser therefore will not continue long to stand in their own light and to argue that this state of affairs is all wrong, but they will adopt the incubator as a boon and a blessing.

The Prairie State Incubator Company, a pioneer in this field, feels it has a record to be proud of. Its twenty-five years of incubator building have been marked with many incidents which demonstrate how slowly and yet how certainly improvement marches on, carrying everything before it. The first few years were a constant



ULTIMHEAT®

UNIVERSITY MUSEUM



## CATALOGUE OF PRAIRIE STATE JR. INCUBATORS

---

---

struggle against what seemed insurmountable obstructions to progress. Inexperience and a limitation of the knowledge of artificial incubation made results unsatisfactory. Many poultrymen considered the incubator as the next thing to the work of the evil one and were prone to shun it. But step by step prejudice has been pursued by progress and improvement until the former has been almost entirely obliterated. Scientific knowledge, gained through extensive experiments and experience, has been turned to practical account, with the result that the successful *Prairie State Incubator*, the acknowledged leader of them all, is as nearly perfect as a machine can be made.

The beginner, who never in his life hatched a batch of chickens with a machine, finds it a positive pleasure to use the *Prairie State*, and the expert poultryman, who has tried many different makes, increases his profits and builds his business bigger with this same machine. This adaptability of one machine to the beginner and experienced user alike shows to what perfection science has carried us in the making of our simple, practical *Prairie State Hatchers*.

No one need fear for results or hesitate to buy an incubator in this day. It is a labor-saving, time-saving, money-producing machine, that makes the business of poultry-raising perfectly adapted to the small city home with a little back yard as well as to the farm with its broad fields. There is a never-satisfied demand for the products of the poultry pen, and no business offers such big returns for the investment of a small amount of money as raising chickens and eggs for market. It's a pleasant and profitable occupation for boys and girls, for the women of the home, or even for the man who has looked with contempt upon the "egg money" as a mere side issue. Many a mortgage has been paid by "Biddy" and her cackle is sweet music to the housewife who feeds the family on what the hens contribute for their care and keep.

In presenting the *Prairie State Junior Incubator* to you we wish to say that the features which have given the regular *Prairie State* such a world-wide reputation, and that have made it pre-eminently the greatest hatching machine ever built have all been retained in this newer style machine.

For years we have been receiving calls from beginners and farmers generally for a cheaper machine, and have all along had in mind the building of such, but not until the present season have we felt that we had perfected a machine that would fully meet our rigid requirements, and which we could sell at a reduction from the price of our regular *Prairie State Incubators*. But we now offer the "*Junior*" to the poultry-raiser as the perfected product of our endeavor—a reliable, practically perfect machine at a price within the reach of all. Carefully read the following pages and we think you will agree with us that we are offering here the *best hatcher bargain* on the market to-day.

Very truly yours,

**PRAIRIE STATE INCUBATOR CO.**  
Homer City, Pa.



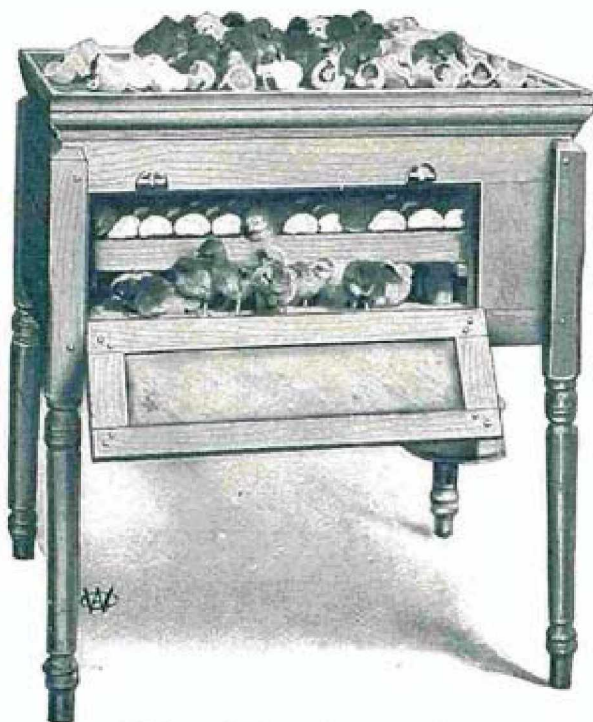




**H**ATCHING chickens with an incubator is a delightful pastime for young people. It is profitable and is a nice, clean occupation.

Boys and girls love little chickens. The fluffy little balls of down, so cute, so soft and so helpless, appeal in an especial way to the natural instincts and the innate love of nature in the young. It is well to encourage this love for the innocent and helpless—it tends to develop gentleness and nobility of character.

To put the eggs into the machine, to care for them, to watch the daily progress of the hatch, and the feverish expectancy which occupies the mind furnish a great deal of healthful entertainment. And then, when the eggs begin to pip—what child isn't full of enthusiasm and indescribable emotions at that time?



"A Lot of Fluffy Little Fellows"

If you would train your children to become useful men and women, begin early to interest them in some pleasant, beneficial occupation that will furnish them not only amusement, but enough of daily responsibility to make them attentive to their duties. Play becomes monotonous, and work gets distasteful unless there are attainable results worth striving for.

Give your boy or girl a "Junior" *Prairie State Incubator*, provide them a nice little poultry house with a runway, and encourage them, by your aid and counsel, to raise chickens. It will be the best investment you ever made. It will furnish them enough of reward to maintain their interest



## CATALOGUE OF PRAIRIE STATE JR. INCUBATORS

---

---

and to develop a love for the business end of the proposition as well. The "Junior" is a simple, easily operated machine that any boy or girl can use, and they can hatch big hatches of chicks—good, healthy chicks, too, the first time they set it. Ease of operation and sure results make the "Junior" the best machine in the world for the beginner. It's really easier to take care of a *Prairie State Incubator*, hatching 100 eggs, than it is to look after two hens with 26 eggs. It's cleaner, nicer work; besides, it allows the hens to keep on laying, which is more profitable than having them set.

But don't buy a toy incubator, nor experiment with a cheap machine with nothing to recommend it but a low price.

Don't think any old second-hand, doubtful make of incubator is good enough for the beginner.

Don't discourage the boy or girl, at the start, with a machine that requires an expert to handle, and that can but bring disappointment and discouragement from the first hatch. Poor results soon kill the very desire and ambition you wish to cultivate.

No, give the youngster the best machine in the world to start with—let it be a *Prairie State "Junior."* You know what the name *Prairie State* stands for, you know what it has done and you know that we can not afford to send out a machine that will cast a shadow on the fair name we have earned through years of honest dealing.

We want to help the beginner; our vast business has been built up by the help of beginners—we were all beginners one day, so we have a specially warm spot in our hearts for them. It's the beginner who accomplishes things. The one who never begins never "gets there." To help the thousands who have not yet commenced to use incubators, and who are delaying to do so on account of the initial cost of starting, we have perfected the "Junior," and we offer it as the best cheap machine that money and experience can build.

Because we realize the value of a right sort of a *start* we do not hesitate to advise that nothing but good appliances be purchased. Our reputation is back of this new "Junior" incubator, and is a guarantee which means that this machine will do just what we claim for it. The "Junior" is without a doubt the solution of the problem for the thousands who want to enter the poultry-raising business on an economical basis. It will enable boys and girls, men and women of limited means, to enter a profitable occupation on a minimum expenditure and be certain of success.

6 A trial will prove the soundness of our claims for this newest member of the *Prairie State* family, and we trust that you will not hesitate to order one if you want to commence raising chickens the best way.



ULTIMHEAT®  
UNIVERSITY MUSEUM

# Jr. CONSTRUCTION

## Design

**T**HE *Prairie State Junior Incubator* has embodied in its construction the best selection of ways and means that have accumulated through an experience of twenty-five years. The adaptation of the most successful methods in the latest and most advanced practice in artificial incubation. The whole incorporated in a simple design that is economical in construction and successful in practice. This machine is for the farmer, poultryman or those who raise poultry in limited numbers, and, owing to their small size, to reduce the care and attention required to a minimum or the lack of experience in operators, every automatic feature that could be incorporated in an incubator has been used without a multitude of parts—no trap doors, felts or tubes to bewilder or confuse the user. It comes the nearest to putting in your eggs and taking out your chicks of any incubator with which we are acquainted.

We have used the best system of heating, radiant top heat, the same that is employed in hot-water incubators, and have avoided their shortcomings of short life and difficulty of ventilation.

These machines contain the following automatic features:

Automatic Regulation.

Automatic Moisture Supply by Diffusion Screens.

Automatic Ventilation.

The operator fills the lamp, turns the eggs twice a day, at one turning cools a little. No other care or attention is required. It does not require previous experience or knowledge to operate beyond a few simple directions that accompany the machine.

## Case

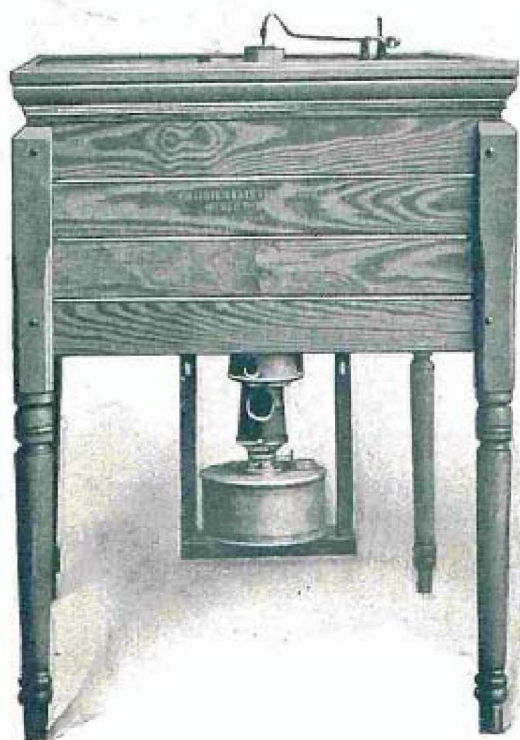
The case is carefully constructed of the best air-seasoned and kiln-dried stock. Yellow and white pine, poplar, chestnut or bass wood are used in their several places where experience has demonstrated their peculiar fitness. Outside case is clear, lumber free from knots, smoothed, filled and varnished. No incubator of any make



ULTIMHEAT®

UNIVERSITY MUSEUM





is better finished. Legs are nicely turned and detachable, made of hard maple, finished to correspond to the balance of the machine. The case is double and packed with cotton batting and strawboard in layers. Machine is absolutely fireproof. All parts exposed to heat are protected by mineral wool, asbestos insulation and metal. Provision is made for expansion and contraction of the wood in the machine to avoid opening up of cracks or joints.

### Heater

The heat from the lamp is conducted to a galvanized tank or radiator covering the entire top of egg chamber. All joints are lapped, seamed and soldered. Full provision is made to prevent in any possible way the gas from the lamp entering the egg chamber. Heat is distributed uniformly throughout. No cold corners or hot centers. This system of heating will develop more germs and in connection with our diffusion system bring out more chicks from a given number of eggs than any other incubator outside of a regular *Prairie State*.

### Regulator

The heat is under the automatic control of a corrugated, compound, double, pull-down wafer regulator. This is the most expensive and best wafer regulator made. Hung close to the eggs so as to get their heat and it will control the heat within a fraction of a degree—very sensitive to heat changes and very powerful. We use the pull-down type for the reason the push form sometimes will move the valve lever off the supports and control of the heat is lost. We place the valve lever on top of the machine for the reason it makes a direct connection to the valve lever and avoids the complication and danger of the side connection with compound levers working through a narrow slit.

### Ventilation

The bottom of machine made of double burlap screens—ventilation is secured in part by diffusion. In addition to this there is available a forced current of fresh,



warm (not hot) air which diffuses downward through the egg chamber. The inlet is under the control of a sliding cover. The amount admitted is constant under all conditions, depending solely upon the width of valve opening. The auxiliary ventilation is only found upon the highest grade and most costly incubators, in combination with the diffusive system and moisture control.

### Moisture

Moisture is so seldom required that we might say none is needed. It is secured in a very perfect manner through the porous diffusion screens in the bottom of the machine. The operator does not have to bother with this question at all. The egg contains all the elements necessary for the growth of the embryo, water included. Oxygen must be given to the growing embryo and the waste gaseous products eliminated from the shell, carried away. This the machine does perfectly by providing abundance of fresh air, yet doing it without robbing the developing chick of the water in the shell. There are no air cells to watch, slides to work back and forth, to obtain just the correct amount of moisture. The machine provides the proper amount automatically, by maintaining the same amount of moisture tension in the egg chamber as in the outside air. As long as there is moisture in the air it will be found in the machine. In high altitudes the natural air is often too dry for successful incubation. In those cases a moisture pan is provided in this machine in the upper part of the egg chamber to dampen the air in the machine artificially.

### Nursery

There is a space between the tray and the glass door through which the chicks drop into the nursery below, to the mutual benefit not only of themselves but those that are hatching.

### Lamp

Lamp is constructed of heavy, galvanized iron can with the heaviest brass collar, Sun Hinge Burner, made with large oil filler. Burner has a long steel chimney with mica front, insuring a bright, clear flame, cold oil and perfect safety. It is held in position by means of a swinging shelf; can be placed in position or detached instantly.

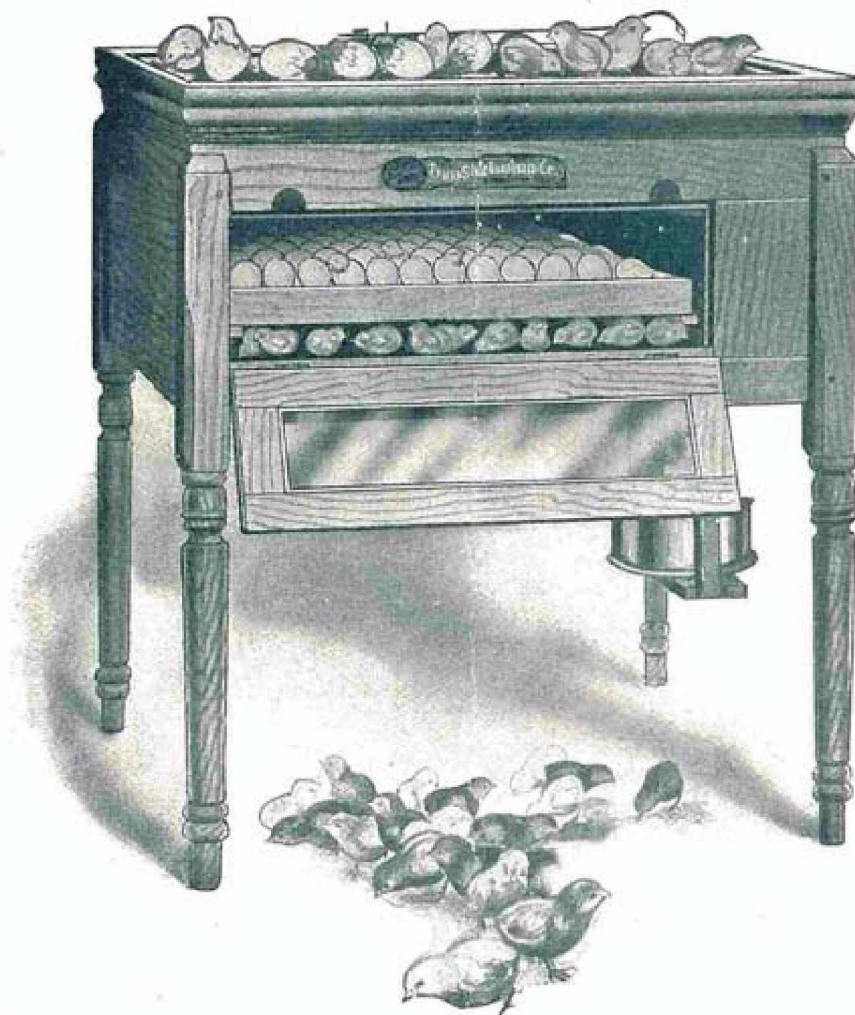


## Egg Tray

Egg tray is light and strong, with wire bottom, permitting easy handling and turning of the eggs, which is done by the shuffling method. A more uniform development and higher per cent of hatches can be made by this method than any other.

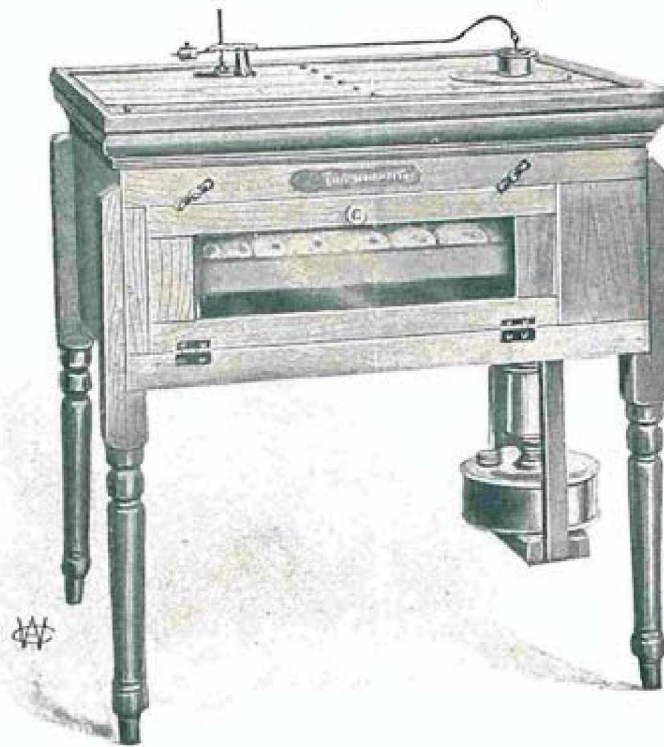
The egg chamber is very large and roomy, giving the "Junior" a greater capacity for the money than any other low-priced incubator.

Design, materials used, construction and operation of the "Junior" all prove conclusively that it is not a cheap machine, despite its low price. It is built especially for the farmer and the beginner everywhere, but it is not an amateur machine in any sense of the word. Durability and efficiency are the main requirements, and nothing which is at all essential to the hatching of healthy chicks has been sacrificed to price. All in all, the "Junior" is a big surprise to the purchaser when the machine arrives and is put to the test.





PRAIRIE STATE **Jr** INCUBATOR No. 1



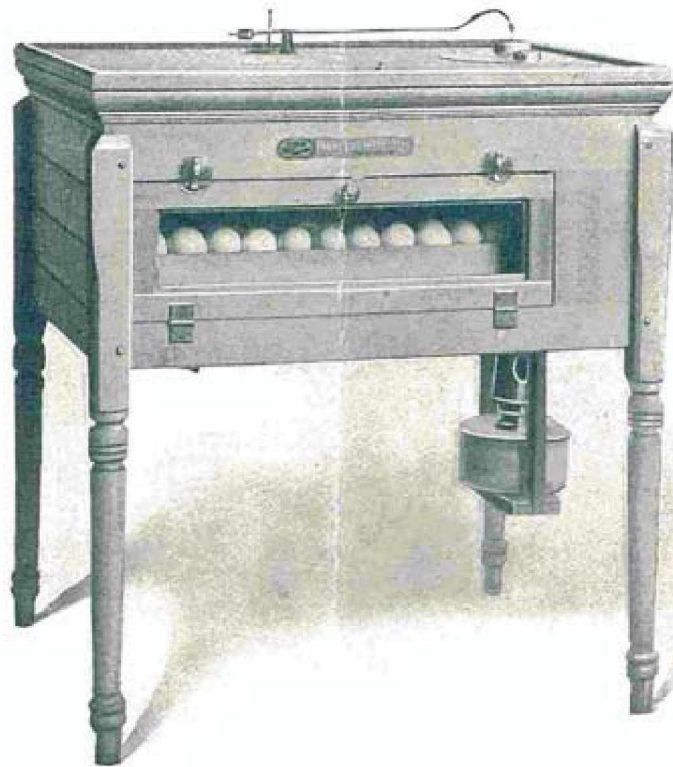
**PRAIRIE  
STATE  
JUNIOR  
INCUBATOR  
NUMBER 1**

Capacity - - - - - 60 hen eggs of the largest size.  
Case is double, except back.  
 Dimensions - - Height, 25 in. Top, 21 in. x 24 in.  
 Weight, crated - - - - - 60 pounds.  
 Weight, net - - - - - 40 pounds.  
**Price, complete - - - - - \$6.50**

12



PRAIRIE STATE **Jr** INCUBATOR  
 No. 2

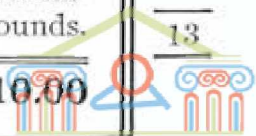


**PRAIRIE  
 STATE  
 JUNIOR  
 INCUBATOR  
 NUMBER 2**

Capacity - - - - - 100 hen eggs.  
 This machine has a double case throughout, packed with cotton batting and paper insulation.  
 Dimensions - Height, 32½ in. Top, 24½ in. x 30 in.  
 Weight, crated - - - - - 90 pounds  
 Weight, net - - - - - 66 pounds.

---

**Price, complete - - - - - \$10.00**





## CATALOGUE OF PRAIRIE STATE JR. INCUBATORS

---

**W**E trust that a careful study of the very complete description we have given herein of the construction and principles on which the Prairie State "Junior" Incubator operates has convinced you that it is a machine in every way deserving of your confidence.

What the user of an incubator wants above everything else is *results*. He doesn't care so very much how the machine is built, what the method of heating, system of ventilation, or principles and theories it involves. He isn't much disturbed if there is an entire lack of theories, so long as the *operation is easy* and the *results are certain*. Good, healthy chicks and lots of them is the *great essential*, and this he demands and must have.

The practical purchaser knows what points to look for, and what features to shun in buying a hatching machine, but the beginner must take much for granted—unless he buys an incubator with a reputation and made by a reliable concern.

Price is not always a fair guide to go by, nor is it always an indication of real value. *Results* and *service* alone can determine the true value of an incubator. The *Prairie State* has a fixed staple value in the minds of poultrymen everywhere. The "Junior" is a *Prairie State*, and is offered as a worthy young member of an old, honest, honorable family.

It isn't an experiment, put out to try what it can do, but it is a perfected product way past the experimental stage, and opens up opportunities for the young and inexperienced to enter a pleasant, profitable occupation on small capital and grow to something bigger and better as they learn the business.

This catalogue being but an advance circular of our complete 1906 line, testimonials are omitted, but we have thousands of them and can produce the proof if you are not familiar with our wares. Write for the regular catalogue, also our new Brooder Catalogue, showing the latest improvements in brooders and the new Universal Hover. The Prairie State Incubator hatches big hatches and the Prairie State Brooder raises them all. We solicit correspondence about anything pertaining to the hatching and rearing of poultry, and will answer all questions promptly. Write to-day for the "Junior" you want.

Very truly yours,

**PRAIRIE STATE INCUBATOR CO.**  
Homer City, Pa.