

GAS CONTROLS

ESSEX

GAS CONTROLS

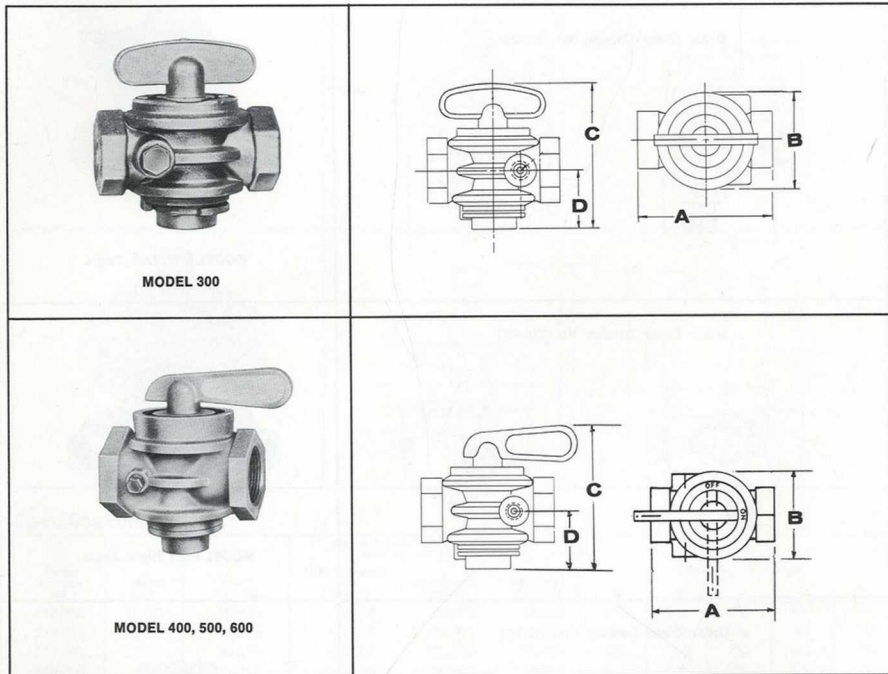
& CROSS REFERENCE

INDEX

	Page
Main Manual Shut-off Valves	1
Pilot Valves	2
Pressure Regulators	3
Combination Manual Valve and Regulator	4
Automatic Main Gas Valves	5
Combination Controls	6-7
Magnetic Safety Units	8-9
Operators	10-13
Conversion Kits	13
Repair Parts — Supplementary Cross Reference	14-15
Interchanges	16-21

All Essex Manual Valves shown here are drilled, tapped, and plugged both left and right side for pressure taps. Each valve is precision machined for fit, and receives a three-pound bubble test against leakage on the final assembly. These Essex aluminum alloy valves are permanently lubricated at the factory, making maintenance unnecessary, and are A.G.A. and C.G.A. certified for natural gas, LP gas-air mixtures, manufactured gas, LP gases, and mixed gases.

Main Shut-Off Valves



MODEL 300

MODEL 400, 500, 600

SPECIFICATIONS

Order Catalog No.	Model No.	NPT Inch Size	Capacity BTU/hr. @ 1.0" Pressure Drop for gases of 1,000 BTU per CU ft. or more	Dimensions In Inches			
				A	B	C	D
215-100	300*	3/8 x 3/8	534,000	2 1/16	2	2 1/16	1 1/16
215-101	300*	1/2 x 1/2	685,000	2 1/16	2	2 1/16	1 1/16
215-102	400	3/4 x 3/4	1,395,000	3 1/2	2 3/8	3 1/16	1 1/16
215-103	500	1 x 1	1,835,000	3 1/2	2 3/8	3 3/16	1 3/16
215-104	600	1 1/4 x 1 1/4	2,800,000	4	3 1/8	5 1/16	2 3/16

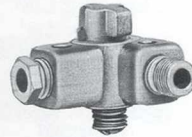
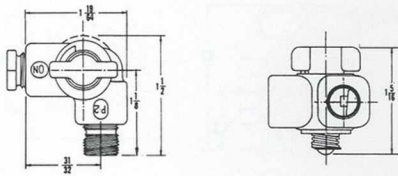
* "T" Handle Only

Pilot Valves

All valves have 1/8 inch NPT close nipple in the inlet and 1/4 CC tube fitting finger tight in the outlet.

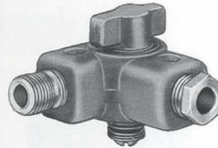
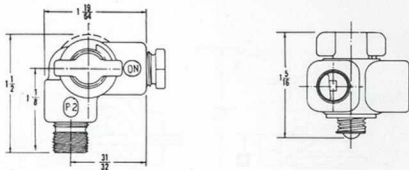
These Essex Pilot Valves are constructed of an aluminum alloy and are A.G.A. and C.G.A. certified for natural gas, LP gas-air mixtures, manufactured gases, LP gases, and mixed gases.

Order Essex Catalog No. 215-200



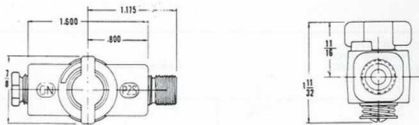
MODEL P-2L Left Angle

Order Essex Catalog No. 215-201



MODEL P-2R Right Angle

Order Essex Catalog No. 215-202



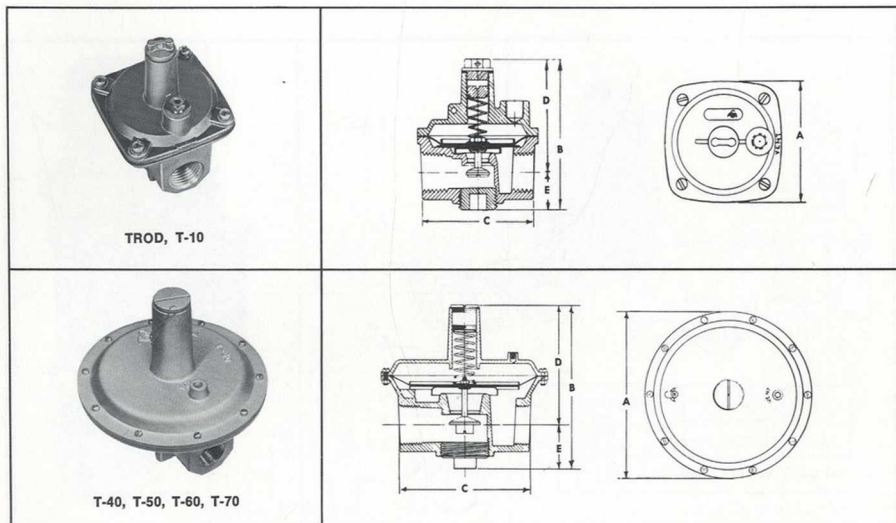
MODEL P-2S Straight

Essex Low-Pressure Gas Regulators are equipped with a synthetic diaphragm which has a nylon base with a Buna-N coating. The castings are precision made of a special aluminum alloy, which provides exceptional strength with minimum weight for the regulator size. The body castings and the incorporated valve seats are made of corrosion-resistant material. The valves and seats are machined to extremely close tolerances for dependability and maintenance-free service.

Essex aluminum alloy Gas Pressure Regulators are A.G.A. certified for natural gas, manufactured gas and mixed gases.

All Essex Gas Pressure Regulators sizes T-40 and larger have 1/4 CC tube fitting finger tight and a screen in the vent. Units shipped complete with instructions.

Pressure Regulators



TROD, T-10

T-40, T-50, T-60, T-70

Specifications

Order Catalog No.	Model No.	NPT Inch Size	Listed A.G.A. Rating for 1,000 BTU 0.64 sp. gr. Natural Gas			Dimensions in Inches				
			0.3" Pressure Drop Capacity	Max. Reg. Capacity	Min. Reg. Capacity	A	B	C	D	E
215-300	TROD*	1/8 x 1/8	17,700	24,900	2,490	2 1/2	3 1/2	2 1/8	2 3/8	1 1/2
215-301	TROD*	3/8 x 3/8	112,500	155,000	15,500	2 1/2	3 3/4	2 1/8	3 1/8	2 1/2
215-302	TROD*	1/2 x 1/2	126,000	184,000	18,400	2 1/2	3 3/4	2 1/8	3 1/8	2 1/2
215-303	T-10*	1/2 x 1/2	165,000	262,000	38,800	3	4 1/2	2 1/8	3 3/8	1 3/4
215-304	T-10*	3/4 x 3/4	193,900	290,800	48,500	3	4 3/4	2 1/8	3 1/2	1 1/4
215-305	T-40**	3/4 x 3/4	438,900	589,500	65,500	6	7 1/2	5	5 1/4	1 3/4
215-306	T-40**	1 x 1	569,900	786,000	98,300	6	7 1/2	5	5 1/8	1 3/4
215-307	T-50**	1 x 1	681,200	838,400	196,500	8	9 1/8	6 1/8	6 1/2	2 1/2
215-308	T-50**	1 1/4 x 1 1/4	864,600	1,113,500	196,500	8	9 1/8	6 1/8	6 1/2	2 1/2
215-309	T-60**	1 1/4 x 1 1/4	1,093,900	1,441,000	262,000	10	11	7 1/8	8 1/8	2 7/8
215-310	T-60**	1 1/2 x 1 1/2	1,369,000	1,572,000	262,000	10	11	7 1/8	8 1/8	2 7/8
215-311	T-60**	2 x 2	1,572,000	1,965,000	262,000	10	11	7 1/8	8 1/8	2 7/8
215-312	T-70**	2 x 2	1,945,400	2,620,000	327,000	12	12 1/2	9 1/8	9 1/2	3 1/8
215-313	T-70**	2 1/2 x 2 1/2	2,227,000	2,908,200	327,000	12	12 1/2	9 1/8	9 1/2	3 1/8

Vent: 1/8" pipe.

* Certified for mounting multipoise. ** Certified for mounting upright to 90° in any direction.

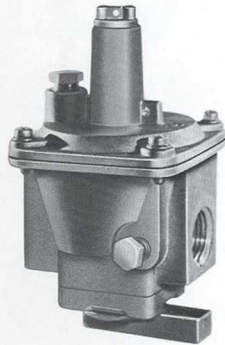
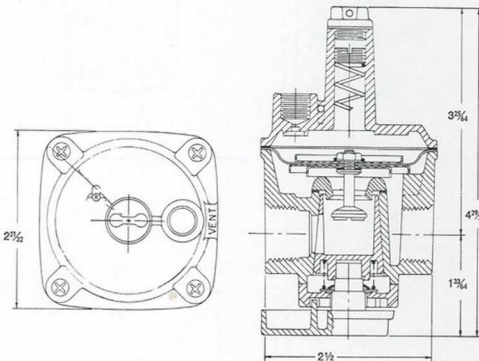
For Interchange Guide See Pages 16-21

Combination Manual Valve and Regulator

Essex Model VR-1 provides the dual function of a manual shut-off valve and pressure regulator in one compact control. It has the same face to face dimensions as a regulator alone and may be installed in any position.

VR-1 is constructed of a field proven aluminum alloy and features a non-displaceable type rotor in the valve. The lever type handle gives instant recognition of the valve position.

The control comes equipped with a No. 78 drill leak limiting device and has 1/2" NPT inlet and outlet pipe connections. Both sides are tapped and plugged with 1/8" NPT pipe plugs.



MODEL VR-1

ORDER CATALOG NO. 215-314

A.G.A. Specifications

Inlet and Outlet Sizes	1/2 Inch
0.3 in. Pressure Drop Capacity	120,500
1.0 in. Pressure Drop Capacity	220,000
Max. Regulation Capacity (main burner load)	196,000
Min. Regulation Capacity (main burner load)	19,600
Outlet Pressure Range (in W.C.)	2.5 to 5.0
Positioning	Multi-raise
Max. Operation Temperature	Room

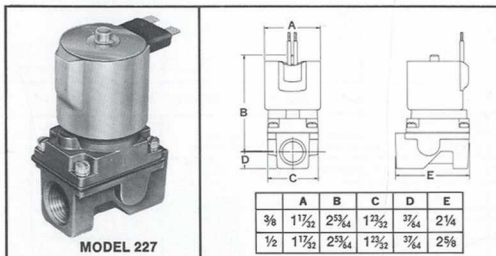
All capacities in terms of 0.64 sp. gr., 1,000 BTU per cu. ft. gas.



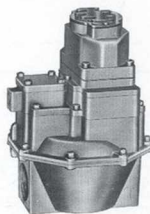
All Essex Series S and 227 Automatic Main Gas Valves are constructed of aluminum die cast bodies and quiet, field proven electromagnetic operators. A.G.A., U.L., and C.S.A. listed for use with natural, manufactured, LP and mixed gases, these valves feature high capacity and rugged, compact design.

Designed for mounting upright to 90° in any direction at a maximum input pressure rating of ½ PSIG, Essex Automatic Main Gas Valves are ideally suited for high input general heating and appliance applications.

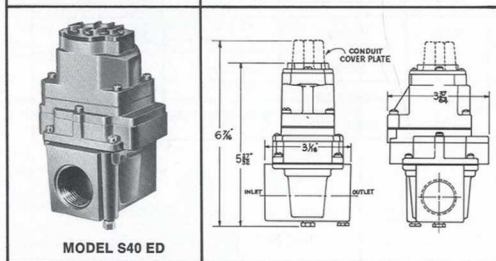
Automatic Main Gas Valves



MODEL 227



MODEL S60 ED



MODEL S40 ED

Catalog No.	A	B	C
215-408	8 15/32	7 23/32	1 5/64
215-409	9 25/32	9 1/32	1 31/64

Specifications:

Order Catalog No.	Model No.	Voltage 60 CPS	Current AMPS	Operator Termination	Pipe Size NPT-Inches	Capacity BTU/HR. 1.0" W.C. for 1,000 BTU/ft. Gas
215-400	227*	24	0.65	Leadwires	3/8 x 3/8	180,000
215-401	227*	120	0.15	Leadwires	3/8 x 3/8	180,000
215-402	227*	24	0.65	Leadwires	1/2 x 1/2	220,000
215-403	227*	120	0.15	Leadwires	1/2 x 1/2	220,000
215-404	S40-EDLR**	24	0.40	Screws	3/4 x 3/4	622,300
215-405	S40-EDLR**	120	0.09	Leadwires	3/4 x 3/4	622,300
215-406	S40-EDR**	24	0.40	Screws	1 x 1	736,200
215-407	S40-EDR**	120	0.09	Leadwires	1 x 1	736,200
215-408	S60-EDR**	24	0.40	Screws	1 1/4 x 1 1/4	1,703,000
215-409	S60-EDR**	120	0.09	Leadwires	1 1/4 x 1 1/4	1,703,000
215-410	S60-EDR**	24	0.40	Screws	1 1/2 x 1 1/2	2,358,000
215-411	S60-EDR**	120	0.09	Leadwires	1 1/2 x 1 1/2	2,358,000

* All 227 models have 3/8" pipe pressure tap and plug on both sides of the valve.

** All S40 and S60 models are equipped with 1/2" NPT x 1/4" CC bleed fitting and 1/4" pipe pressure tap and plug in bottom of the valve.

Combination Gas Controls

The Essex full five-function Combination Gas Controls for use in general heating appliances, feature design simplicity and economy. These rugged, field proven performers are designed for use in applications on central heating furnaces, unit heaters, duct furnaces, and boilers. All manual and automatic control functions required for safe operation are incorporated in one compact unit.

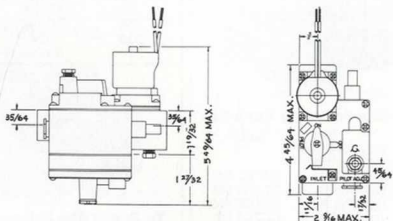
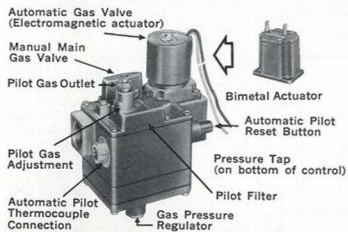
Specifications:

Order Catalog No.	Model No.	Voltage 60 Hz	Current AMPS	Operator Termination	Pipe Size NPT-Inches	Capacity BTU/HR. 1.0" W.C. for 1,000 BTU per cu. ft. gas
215-500	TF155	24	0.65	Leadwires	½ x ½ or ½ x ¾	155,000
215-501	TF555	24	0.43	¼" Tab		
215-502	CC166 EM	24	0.40	Screw	½ x ½ or ½ x ¾	160,000
215-503	CC166 EM	120	0.09	Leadwires		
215-504	CC251 EM	24	0.40	Screw	½ x ½ or ½ x ¾	220,000
215-505	CC251 EM	24	0.40	Screw	¾ x ¾	245,000
215-506	CC251 EM	120	0.09	Leadwires		
215-507	TF650 H	24	0.65	Leadwires	¾ x ¾	265,000

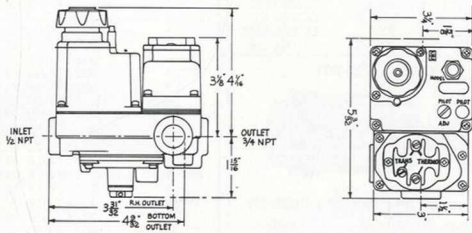
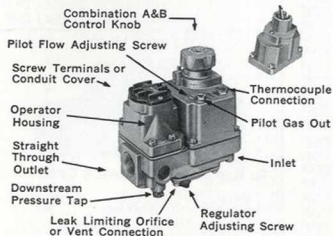
Engineering Specifications:

- **Pressure Rating:** ½ PSI (14" W.C.) Max.
- **Pressure Regulator:** 3.1" to 4.2" W.C. Adjustable
- **Pipe Connections:** Straight Through
- **Safety Pilot:** Thermomagnetic Mechanical Safety Pilot
- **Valve Body:** Cast Aluminum
- **Ambient Temp. Ratings:** Safety Housing 125° F; Pressure Regulator 200° F; Operator 150° F
- **Pilot Connections:** Compression connections for ¼" O.D. tubing
- **Regulator Vent Connection:** ⅛" NPT
- **Pilot Gas Filter:** 3.65 CFH of Air

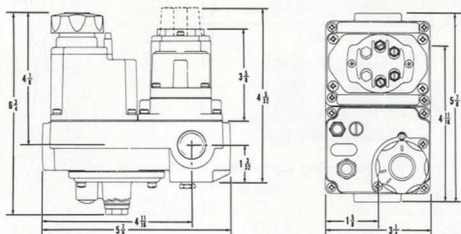
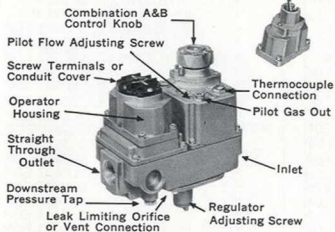
Catalog Nos. 215-500 & 215-501



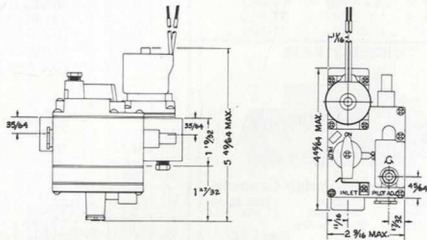
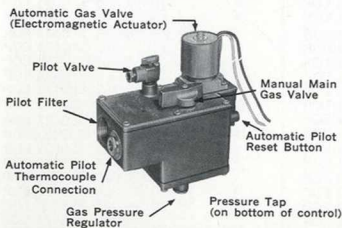
Catalog Nos. 215-502 & 215-503



Catalog Nos. 215-504, 215-505 & 215-506



Catalog No. 215-507



Magnetic Safety Units — Repair Parts

ORDER 215-600



To Repair The Following Controls

ESSEX PART NO. On All Series	CCA PART NO. On All Series	MODEL NO.
285	90202	CC251 EM
286	90203	CC166 EM
287	90208	CC166 EMG
288	90209	CC251 DE
291	90221	CC251 ED
*	90204	CC251 EO
*	90261	CC251 K
*	90210	CC250 ED
*	90219	CC250 K
*	90213	CC166 EMT
*	90214	CC166 EH

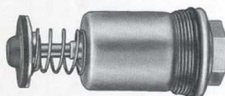
ORDER 215-601



To Repair The Following Controls

ESSEX PART NO. On All Series	MODEL NO.
200	TF-5
210	TF-50

ORDER 215-602



To Repair The Following Controls

ESSEX PART NO. On All Series	MODEL NO.
209	TF-150
210	TF-155
211	TF-555
212	TF-600
213	TF-650
*	TF-500

ORDER 215-603

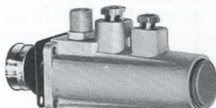


To Repair The Following Controls

ESSEX PART NO. On All Series	CCA PART NO. On All Series	MODEL NO.
*	10211	SA41 EO
*	10212	SA51 EO

ESSEX PART NO. On All Series	CCA PART NO. On All Series	MODEL NO.
*	10225	SA61 EO
306	90238	SA41 EDL
308	90242	SA51 ED
310	90244	SA61 ED

ORDER 215-604



To Repair The Following Controls

ESSEX PART NO.	CCA PART NO.	MODEL NO.
*	90247-001	SL5521 EDP
*	90247-002	SL5521 EDP
*	90247-003	SL5521 EDP
*	90247-004	SL5521 EDP
*	90247-005	SL5521 EDP
*	90247-006	SL5521 EDP
*	90247-007	SL5521 EDP
*	90247-008	SL5521 EDP
*	90247-009	SL5521 EDP
*	90247-010	SL5521 EDP
*	90247-013	SL5521 EDP
*	90247-014	SL5521 EDP
*	90247-016	SL5521 EDP
*	90247-017	SL5521 EDP
*	90247-018	SL5521 EDP
*	90247-019	SL5521 EDP
*	90247-020	SL5521 EDP
*	90247-021	SL5521 EDP
*	90247-022	SL5521 EDP
*	90247-023	SL5521 EDP
*	90247-024	SL5521 EDP
*	10221-001	SL5500 K
*	10221-002	SL5500 K
*	10221-003	SL5500 K
*	10184-001	SL5521 EOP
*	10184-002	SL5521 EOP
*	10184-003	SL5521 EOP
*	10184-004	SL5521 EOP
*	10184-005	SL5521 EOP
*	10184-006	SL5521 EOP
*	10184-007	SL5521 EOP
*	10184-012	SL5521 EOP
*	10184-013	SL5521 EOP
*	10184-014	SL5521 EOP
*	10184-015	SL5521 EOP
*	10184-016	SL5521 EOP
*	10184-017	SL5521 EOP
*	10184-018	SL5521 EOP
*	10184-019	SL5521 EOP
*	10184-020	SL5521 EOP
*	10184-021	SL5521 EOP
*	10184-022	SL5521 EOP
*	10184-023	SL5521 EOP
*	10184-024	SL5521 EOP
*	10184-025	SL5521 EOP
*	10184-026	SL5521 EOP
*	10184-027	SL5521 EOP
*	10184-028	SL5521 EOP
*	10184-030	SL5521 EOP
*	10184-031	SL5521 EOP
*	10184-032	SL5521 EOP
*	10184-033	SL5521 EOP
*	10184-036	SL5521 EOP
*	10184-039	SL5521 EOP
*	10184-040	SL5521 EOP

ESSEX PART NO.	CCA PART NO.	MODEL NO.
*	10184-041	SL5521 EOP
*	10184-042	SL5521 EOP
*	10184-043	SL5521 EOP
*	10184-044	SL5521 EOP
*	10184-045	SL5521 EOP
*	10184-046	SL5521 EOP
*	10184-047	SL5521 EOP
*	10220-001	SL5521 DEP
*	10220-002	SL5521 DEP
*	10220-003	SL5521 DEP
*	10220-006	SL5521 DEP
*	10220-009	SL5521 DEP
*	10220-010	SL5521 DEP
*	10220-011	SL5521 DEP
*	10220-014	SL5521 DEP
*	10220-019	SL5521 DEP
*	10220-020	SL5521 DEP
*	10220-024	SL5521 DEP
*	10220-029	SL5521 DEP
*	10220-030	SL5521 DEP
*	10233-006	SL5571 DEP

ORDER 215-605



To Repair The Following Controls

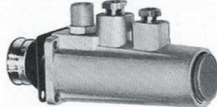
ESSEX PART NO.	CCA PART NO.	MODEL NO.
*	10216-001	SL101 P
*	10216-003	SL101 P
*	10216-004	SL101 P
*	10216-008	SL101 P
*	10216-016	SL101 P
*	90248-001	SL5421 EDP
*	90248-002	SL5421 EDP
*	90248-003	SL5421 EDP
*	90248-004	SL5421 EDP
*	90248-005	SL5421 EDP
*	90248-006	SL5421 EDP
*	90249-001	SL5471 EDP
*	90249-002	SL5471 EDP
*	90249-003	SL5471 EDP
*	10228-001	SL5421 EOP
*	10228-002	SL5421 EOP
*	10228-003	SL5421 EOP
*	10228-004	SL5421 EOP
*	10228-005	SL5421 EOP
*	10228-006	SL5421 EOP
*	10228-007	SL5421 EOP
*	10228-008	SL5421 EOP
*	10228-009	SL5421 EOP
*	10228-010	SL5421 EOP
*	10228-012	SL5421 EOP
*	10228-013	SL5421 EOP
*	10228-014	SL5421 EOP
*	10228-015	SL5421 EOP
*	10228-016	SL5421 EOP
*	10228-018	SL5421 EOP
*	10228-019	SL5421 EOP
*	10228-021	SL5421 EOP
*	10228-022	SL5421 EOP
*	10228-024	SL5421 EOP
*	10228-025	SL5421 EOP
*	10228-026	SL5421 EOP
*	10228-027	SL5421 EOP
*	10228-029	SL5421 EOP
*	10230-001	SL5421 DEP

ESSEX INTERNATIONAL, INC.



ESSEX PART NO.	CCA PART NO.	MODEL NO.
*	10230-003	SLS421 DEP
*	10230-004	SLS421 DEP
*	10230-005	SLS421 DEP
*	10230-010	SLS421 DEP
*	10230-011	SLS421 DEP
*	10230-013	SLS421 DEP
*	10230-014	SLS421 DEP
*	10230-016	SLS421 DEP
*	10230-017	SLS421 DEP
*	10230-018	SLS421 DEP
*	10230-019	SLS421 DEP
*	10230-022	SLS421 DEP
*	10230-023	SLS421 DEP
*	10230-027	SLS421 DEP
*	10230-028	SLS421 DEP
*	10230-029	SLS421 DEP
*	10229-001	SLS471 EOP
*	10229-002	SLS471 EOP
*	10229-003	SLS471 EOP
*	10229-004	SLS471 EOP
*	10229-005	SLS471 EOP
*	10229-006	SLS471 EOP
*	10231-005	SLS471 DEP
*	10231-006	SLS471 DEP
*	10231-008	SLS471 DEP
*	10183-001	SLS400 EOP
*	10183-002	SLS400 EOP
*	10183-003	SLS400 EOP
*	10183-004	SLS400 EOP
*	10183-005	SLS400 EOP
*	10183-006	SLS400 EOP
*	10183-007	SLS400 EOP
*	10183-008	SLS400 EOP
*	10183-009	SLS400 EOP
*	10183-010	SLS400 EOP
*	10183-011	SLS400 EOP
*	10208-001	SLS400 DEP
*	10208-002	SLS400 DEP
*	10208-004	SLS400 DEP

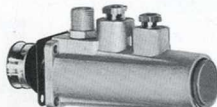
ORDER 215-606



To Repair The Following Controls

ESSEX PART NO.	CCA PART NO.	MODEL NO.
*	10209-016	SL201 P
*	10209-017	SL201 P
*	10209-020	SL201 P
*	10209-021	SL201 P
*	10209-022	SL201 P

ORDER 215-607

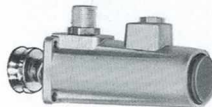


To Repair The Following Controls

ESSEX PART NO.	CCA PART NO.	MODEL NO.
*	10217-001	SL301 P
*	10217-002	SL301 P
*	10217-003	SL301 P
*	10217-004	SL301 P
*	10217-006	SL301 P

ESSEX PART NO.	CCA PART NO.	MODEL NO.
*	10217-007	SL301 P
*	10217-008	SL301 P
*	10217-010	SL301 P
*	10217-013	SL301 P

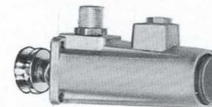
ORDER 215-608



To Repair The Following Controls

ESSEX PART NO.	CCA PART NO.	MODEL NO.
*	10217-005	SL300
*	10217-009	SL301
*	10217-011	SL301
*	10217-012	SL301
*	10217-014	SL301

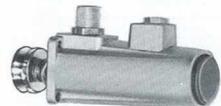
ORDER 215-609



To Repair The Following Controls

ESSEX PART NO.	CCA PART NO.	MODEL NO.
*	10216-002	SL100
*	10216-005	SL100
*	10216-006	SL101
*	10216-007	SL101
*	10216-009	SL100
*	10216-010	SL101
*	10216-011	SL101
*	10216-012	SL100
*	10216-013	SL101
*	10216-014	SL100
*	10216-015	SL101
*	10216-017	SL101
*	10216-018	SL101
*	10216-019	SL101
*	10216-020	SL101
*	10216-021	SL101
*	10228-011	SLS421 EO
*	10228-017	SLS421 EO
*	10228-020	SLS421 EO
*	10228-023	SLS421 EO
*	10228-028	SLS421 EO
*	10230-002	SLS421 DE
*	10230-007	SLS421 DE
*	10230-008	SLS421 DE
*	10230-009	SLS421 DE
*	10230-012	SLS421 DE
*	10230-015	SLS421 DE
*	10230-020	SLS421 DE
*	10230-021	SLS421 DE
*	10230-024	SLS421 DE
*	10230-025	SLS421 DE
*	10230-026	SLS421 DE
*	10231-001	SLS471 DE
*	10281-002	SLS471 DE
*	10231-003	SLS471 DE
*	10231-004	SLS471 DE
*	10231-007	SLS471 DE
*	10231-009	SLS471 DE
*	10208-003	SLS571 DE
*	10208-005	SLS571 DE

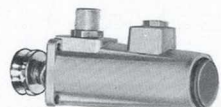
ORDER 215-610



To Repair The Following Controls

ESSEX PART NO.	CCA PART NO.	MODEL NO.
*	10209-001	SL201
*	10209-002	SL200
*	10209-003	SL200
*	10209-004	SL200
*	10209-005	SL200
*	10209-006	SL200
*	10209-007	SL201
*	10209-008	SL201
*	10209-009	SL201
*	10209-010	SL200
*	10209-011	SL200
*	10209-012	SL200
*	10209-013	SL201
*	10209-014	SL201
*	10209-015	SL201
*	10209-018	SL201
*	10209-019	SL201
*	10209-023	SL201
*	10209-024	SL201

ORDER 215-611



To Repair The Following Controls

ESSEX PART NO.	CCA PART NO.	MODEL NO.
*	90247-011	SLS521 ED
*	90247-012	SLS521 ED
*	90247-015	SLS521 ED
*	10184-010	SLS521 EO
*	10184-029	SLS521 EO
*	10184-037	SLS521 EO
*	10184-038	SLS521 EO
*	10184-048	SLS521 EO
*	10220-004	SLS521 DE
*	10220-005	SLS521 DE
*	10220-007	SLS521 DE
*	10220-008	SLS521 DE
*	10220-012	SLS521 DE
*	10220-013	SLS521 DE
*	10220-015	SLS521 DE
*	10220-016	SLS521 DE
*	10220-017	SLS521 DE
*	10220-018	SLS521 DE
*	10220-021	SLS521 DE
*	10220-022	SLS521 DE
*	10220-023	SLS521 DE
*	10220-025	SLS521 DE
*	10220-026	SLS521 DE
*	10220-027	SLS521 DE
*	10220-028	SLS521 DE
*	10233-001	SLS571 DE
*	10233-002	SLS571 DE
*	10233-003	SLS571 DE
*	10233-004	SLS571 DE
*	10233-005	SLS571 DE

* Indicates No Part Number For This Control.

Operators - Repair Parts



ORDER 215-700
24V EMS
To Repair
The Following
Controls

ESSEX PART NO.	CCA PART NO.	MODEL NO.
*	90203-001	CC166 EM
*	90203-002	CC166 EM
286-22301-108	90203-003	CC166 EM
286-22301-101	90203-004	CC166 EM
286-22201-101	90203-008	CC166 EM
286-22201-107	90203-009	CC166 EM
*	90203-010	CC166 EM
286-12301-101	90203-011	CC166 EM
286-22903-111	90203-012	CC166 EM
286-12001-101	90203-013	CC166 EM
286-22903-102	90203-016	CC166 EM
286-22903-105	90203-017	CC166 EM
286-22303-110	90203-018	CC166 EM
286-12302-101	90203-019	CC166 EM
286-32303-103	90203-020	CC166 EM
*	90203-021	CC166 EM
*	90203-023	CC166 EM
*	90203-025	CC166 EM
*	90203-026	CC166 EM
*	90203-027	CC166 EM
*	90203-028	CC166 EM
286-12204-106	90203-029	CC166 EM
287-1208-101	90208-001	CC166 EMG
287-2104-102	90208-002	CC166 EMG
*	90208-003	CC166 EMG
*	90208-004	CC166 EMG
*	90208-006	CC166 EMG
*	90213-001	CC166 EMT
*	90213-002	CC166 EMT
*	90213-003	CC166 EMT
*	90213-004	CC166 EMT
*	90213-005	CC166 EMT
*	90215-001	CC168 EM
*	90215-002	CC168 EM
*	90215-003	CC168 EM
*	90225-001	CC168 EMT



ORDER 215-701
120V EMS
To Repair
The Following
Controls

ESSEX PART NO.	CCA PART NO.	MODEL NO.
286-13101-109	90203-006	CC166 EM
*	90203-007	CC166 EM
286-13101-104	90203-015	CC166 EM
*	90203-022	CC166 EM
*	90203-024	CC166 EM
287-1306-102	90208-005	CC166 EMG



ORDER 215-702
24V EML
To Repair
The Following
Controls

ESSEX PART NO.	CCA PART NO.	MODEL NO.
*	10226-001	CC250 EM

ESSEX PART NO.	CCA PART NO.	MODEL NO.
*	10226-002	CC250 EM
*	10226-003	CC250 EM
*	10226-004	CC250 EM
*	10226-005	CC250 EM
*	10226-006	CC250 EM
*	10226-007	CC250 EM
*	10226-008	CC250 EM
*	10226-009	CC250 EM
*	10226-010	CC250 EM
*	10226-011	CC250 EM
*	10226-012	CC250 EM
*	10226-013	CC250 EM
*	10226-014	CC250 EM
*	10226-016	CC250 EM
*	10226-017	CC250 EM
*	10226-022	CC250 EM
*	10226-023	CC250 EM
*	10226-027	CC250 EM
*	10226-028	CC250 EM
*	10226-029	CC250 EM
*	10226-030	CC250 EM
*	10226-036	CC250 EM
*	10226-037	CC250 EM
*	10226-038	CC250 EM
*	10226-041	CC250 EM
*	10226-043	CC250 EM
*	10226-045	CC250 EM
*	10226-047	CC250 EM
285-32052-101	90202-001	CC251 EM
285-32052-103	90202-002	CC251 EM
285-32052-105	90202-003	CC251 EM
285-12021-102	90202-004	CC251 EM
*	90202-005	CC251 EM
285-32011-107	90202-006	CC251 EM
*	90202-007	CC251 EM
285-12021-106	90202-008	CC251 EM
285-22021-111	90202-009	CC251 EM
*	90202-010	CC251 EM
285-12011-108	90202-011	CC251 EM
285-42052-101	90202-012	CC251 EM
285-42052-105	90202-013	CC251 EM
*	90202-014	CC251 EM
285-22021-110	90202-015	CC251 EM
285-22021-109	90202-017	CC251 EM
285-22021-105	90202-019	CC251 EM
*	90226-001	CC252 EM
*	90226-002	CC252 EM
289-1101-102	90258-001	CC253 EM
289-1102-103	90258-002	CC253 EM



ORDER 215-703
120V EML
To Repair
The Following
Controls

ESSEX PART NO.	CCA PART NO.	MODEL NO.
*	10226-011	CC250 EM
*	10226-012	CC250 EM
*	10226-018	CC250 EM
*	10226-019	CC250 EM
*	10226-020	CC250 EM
*	10226-021	CC250 EM
*	10226-025	CC250 EM
*	10226-026	CC250 EM
*	10226-039	CC250 EM
*	10226-046	CC250 EM
285-23061-110	90202-016	CC251 EM
285-23061-109	90202-018	CC251 EM



ORDER 215-704
24V DE
To Repair
The Following
Controls

ESSEX PART NO.	CCA PART NO.	MODEL NO.
*	90203-001	CC252 DE
*	10227-001	CC250 DE
*	10227-002	CC250 DE
*	10227-003	CC250 DE
*	10227-004	CC250 DE
*	10227-005	CC250 DE
*	10227-006	CC250 DE
*	10227-008	CC250 DE
*	10227-010	CC250 DE
*	10227-011	CC250 DE
*	10227-013	CC250 DE
*	10227-018	CC250 DE
*	10227-020	CC250 DE
*	10227-021	CC250 DE
*	10230-003	SL5421 DEP
*	10230-005	SL5421 DEP
*	10230-011	SL5421 DEP
*	10230-016	SL5421 DEP
*	10230-017	SL5421 DEP
*	10230-019	SL5421 DEP
*	10230-025	SL5421 DEP
*	10230-026	SL5421 DEP
*	10231-004	SL5471 DE
*	10231-006	SL5471 DE
*	10220-002	SL5521 DEP
*	10220-004	SL5521 DE
*	10220-006	SL5521 DEP
*	10220-007	SL5521 DE
*	10220-008	SL5521 DE
*	10220-010	SL5521 DEP
*	10220-011	SL5521 DEP
*	10220-026	SL5521 DE
*	10218-002	S40 DE
*	10218-003	S40 DE
*	10218-006	S40 DE
*	10218-007	S40 DE
*	10208-001	SL5400 DEP
*	10208-002	SL5400 DEP
*	10208-004	SL5400 DEP



ORDER 215-705
120V DE
To Repair
The Following
Controls

ESSEX PART NO.	CCA PART NO.	MODEL NO.
288-1202-103	90209-001	CC251 DE
*	90209-003	CC251 DE
*	10227-014	CC250 DE
*	10227-015	CC250 DE
*	10230-002	SL5421 DE
*	10230-007	SL5421 DE
*	10230-008	SL5421 DE
*	10230-012	SL5421 DE
*	10230-013	SL5421 DE
*	10230-014	SL5421 DEP
*	10230-021	SL5421 DE
*	10231-001	SL5471 DE
*	10231-007	SL5471 DE
*	10220-005	SL5521 DE

* Indicates No Part Number For This Control.

ESSEX INTERNATIONAL, INC.



ESSEX PART NO.	CCA PART NO.	MODEL NO.
*	10220-009	SLS521 DEP
*	10220-013	SLS521 DE
*	10220-017	SLS521 DE
*	10233-001	SLS571 DE
*	10233-003	SLS571 DE
*	10218-001	S40 DE
*	10218-004	S40 DE
*	10218-005	S40 DE
*	10218-008	S40 DE



ESSEX PART NO.

ORDER 215-706
24V ED
To Repair
The Following
Controls

ESSEX PART NO.	CCA PART NO.	MODEL NO.
*	90210-001	CC250 ED
*	90210-008	CC250 ED
*	90210-009	CC250 ED
*	90210-010	CC250 ED
291-304103-104	90221-001	CC251 ED
*	90221-003	CC251 ED
291-304102-109	90221-004	CC251 ED
*	90221-005	CC251 ED
291-404103-109	90221-006	CC251 ED
*	90221-011	CC251 ED
*	90221-015	CC251 ED
*	90221-020	CC251 ED
*	90221-021	CC251 ED
*	90221-023	CC251 ED
*	90221-025	CC251 ED
*	90221-027	CC251 ED
*	90221-029	CC251 ED
291-108102-102	90221-031	CC251 ED
291-307103-104	90221-032	CC251 ED
291-407103-108	90221-033	CC251 ED
*	90248-001	SLS421 EDP
305-107201-4	90236-001	S40 ED
*	90236-002	S40 ED
*	90236-003	S40 ED
*	90236-029	S40 ED
*	90236-030	S40 ED
*	90236-031	S40 ED
*	90236-032	S40 ED
*	90236-036	S40 ED
*	90236-038	S40 ED
*	90236-040	S40 ED
*	90236-042	S40 ED
*	90236-044	S40 ED
*	90236-046	S40 ED
*	90241-002	S50 ED
*	90241-005	S50 ED
*	90241-006	S50 ED
*	90241-009	S50 ED
*	90241-011	S50 ED
*	90241-013	S50 ED
*	90241-015	S50 ED
309-41211-202	90243-002	S60 ED
309-41211-220	90243-004	S60 ED
309-20111-303	90243-006	S60 ED
309-40111-220	90243-007	S60 ED
309-20111-220	90243-008	S60 ED
*	90243-017	S60 ED
*	90243-018	S60 ED
*	90243-019	S60 ED
*	90243-020	S60 ED
*	90243-021	S60 ED
*	90243-026	S60 ED

ESSEX PART NO.	CCA PART NO.	MODEL NO.
*	90243-028	S60 ED
*	90243-030	S60 ED
*	90243-032	S60 ED
*	90243-034	S60 ED
*	90243-036	S60 ED
*	90243-038	S60 ED
*	90243-040	S60 ED
*	90238-008	SA41 ED
*	90238-011	SA41 ED
*	90238-012	SA41 ED
*	90238-013	SA41 ED
*	90238-017	SA41 ED
*	90238-019	SA41 ED
*	90238-021	SA41 ED
*	90238-023	SA41 ED
*	90238-025	SA51 ED
*	90238-027	SA41 ED
*	90242-013	SA51 ED
*	90242-014	SA51 ED
*	90242-017	SA51 ED
*	90242-019	SA51 ED
*	90242-021	SA51 ED
*	90242-023	SA51 ED
*	90244-012	SA61 ED
*	90244-013	SA61 ED
*	90244-014	SA61 ED
*	90244-015	SA61 ED
*	90244-020	SA61 ED
*	90244-022	SA61 ED
*	90244-024	SA61 ED
*	90244-026	SA61 ED
*	90244-028	SA61 ED
*	90244-030	SA61 ED
*	90244-032	SA61 ED
*	90244-034	SA61 ED
*	90204-001	CC251 EO
*	90204-003	CC251 EO
*	90204-004	CC251 EO
*	90204-005	CC251 EO
*	90204-006	CC251 EO
*	90204-009	CC251 EO
*	90204-010	CC251 EO
*	10175-011	CC250 EO
*	10175-013	CC250 EO
*	10175-014	CC250 EO
*	10175-015	CC250 EO
*	10175-016	CC250 EO
*	10175-017	CC250 EO
*	10175-013	CC250 EO
*	10175-031	CC250 EO
*	10175-032	CC250 EO
*	10175-033	CC250 EO
*	10175-035	CC250 EO
*	10175-038	CC250 EO
*	10175-039	CC250 EO
*	10228-003	SLS421 EOP
*	10228-010	SLS421 EOP
*	10228-015	SLS421 EOP
*	10228-016	SLS421 EOP
*	10228-017	SLS421 EOP
*	10228-019	SLS421 EOP
*	10184-006	SLS521 EOP
*	10184-032	SLS521 EOP
*	10184-033	SLS521 EOP
*	10184-046	SLS521 EOP
*	10210-024	S40 EO
*	10210-028	S40 EO
*	10210-029	S40 EO
*	10210-030	S40 EO
*	10210-034	S40 EO
*	10222-001	S50 EO
*	10213-001	S60 EO
*	10211-031	SA41 EO
*	10183-007	SLS400 EOP



ESSEX PART NO.

ORDER 215-707
120V ED
To Repair
The Following
Controls

ESSEX PART NO.	CCA PART NO.	MODEL NO.
291-104203-109	90221-007	CC251 ED
*	90221-008	CC251 ED
*	90221-010	CC251 ED
*	90221-016	CC251 ED
291-208202-107	90221-019	CC251 ED
*	90221-024	CC251 ED
*	90221-026	CC251 ED
*	90221-028	CC251 ED
*	90221-030	CC251 ED
291-104203-104	90221-034	CC251 ED
291-107203-106	90221-035	CC251 ED
291-107203-103	90221-036	CC251 ED
291-407203-108	90221-037	CC251 ED
*	90248-003	SLS421 EDP
*	90249-001	SLS471 EDP
*	90249-002	SLS471 EDP
*	90249-003	SLS471 EDP
*	90247-001	SLS521 EDP
*	90247-002	SLS521 EDP
*	90247-003	SLS521 EDP
*	90247-004	SLS521 EDP
*	90247-005	SLS521 EDP
*	90247-006	SLS521 EDP
*	90247-008	SLS521 EDP
*	90247-009	SLS521 EDP
*	90247-010	SLS521 EDP
*	90247-016	SLS521 EDP
*	90247-018	SLS521 EDP
*	90247-019	SLS521 EDP
*	90247-019	SLS521 EDP
*	90247-024	SLS521 EDP
305-401302-1	90236-004	S40 ED
305-411302-1	90236-005	S40 ED
305-311302-3	90236-006	S40 ED
305-212302-1	90236-008	S40 ED
*	90236-016	S40 ED
*	90236-017	S40 ED
*	90236-019	S40 ED
305-312302-1	90236-020	S40 ED
*	90236-021	S40 ED
305-411302-3	90236-022	S40 ED
*	90236-028	S40 ED
*	90236-028	S40 ED
*	90236-033	S40 ED
*	90236-034	S40 ED
305-401302-2	90236-035	S40 ED
*	90236-037	S40 ED
*	90236-039	S40 ED
*	90236-041	S40 ED
*	90236-042	S40 ED
*	90236-045	S40 ED
*	90236-047	S40 ED
305-409302-1	90236-048	S40 ED
*	90241-001	S50 ED
307-20911-301	90241-003	S50 ED
307-10711-301	90241-004	S50 ED
*	90241-007	S50 ED
*	90241-008	S50 ED
*	90241-010	S50 ED
*	90241-012	S50 ED
*	90241-014	S50 ED
*	90241-016	S50 ED
309-30911-301	90243-001	S60 ED
309-20111-303	90243-006	S60 ED
309-21111-301	90243-011	S60 ED
309-40111-303	90243-012	S60 ED
309-31211-301	90243-013	S60 ED
309-20711-301	90243-014	S60 ED
309-30111-303	90243-016	S60 ED

* Indicates No Part Number For This Control.







ESSEX PART NO.	CCA PART NO.	MODEL NO.	ESSEX PART NO.	CCA PART NO.	MODEL NO.	ESSEX PART NO.	CCA PART NO.	MODEL NO.
*	90243-022	S60 ED	*	10229-005	SL5471 EOP	*	10212-025	SA51 EO
*	90243-023	S60 ED	*	10229-006	SL5471 EOP	*	10212-026	SA51 EO
*	90243-024	S60 ED	*	10184-001	SL5521 EOP	*	10212-030	SA51 EO
*	90243-025	S60 ED	*	10184-002	SL5521 EOP	*	10225-001	SA61 EO
*	90243-027	S60 ED	*	10184-003	SL5521 EOP	*	10225-003	SA61 EO
*	90243-029	S60 ED	*	10184-004	SL5521 EOP	*	10225-004	SA61 EO
*	90243-031	S60 ED	*	10184-005	SL5521 EOP	*	10225-005	SA61 EO
*	90243-033	S60 ED	*	10184-010	SL5521 EOP	*	10225-010	SA61 EO
*	90243-035	S60 ED	*	10184-012	SL5521 EOP	*	10225-012	SA61 EO
*	90243-037	S60 ED	*	10184-013	SL5521 EOP	*	10225-014	SA61 EO
*	90243-039	S60 ED	*	10184-014	SL5521 EOP	*	10225-015	SA61 EO
*	90243-041	S60 ED	*	10184-015	SL5521 EOP	*	10225-020	SA61 EO
*	90238-001	SA41 ED	*	10184-016	SL5521 EOP	*	10225-021	SA61 EO
306-20932-301	90238-002	SA41 ED	*	10184-017	SL5521 EOP	*	10225-026	SA61 EO
306-31133-301	90238-003	SA41 ED	*	10184-020	SL5521 EOP	*	10225-027	SA61 EO
*	90238-010	SA41 ED	*	10184-023	SL5521 EOP	*	10225-029	SA61 EO
*	90238-014	SA41 ED	*	10184-039	SL5521 EOP	*	19189-006	SL5400EOP
*	90238-015	SA41 ED	*	10184-040	SL5521 EOP			
*	90238-016	SA41 ED	*	10184-041	SL5521 EOP			
*	90238-018	SA41 ED	*	10184-042	SL5521 EOP			
*	90238-020	SA41 ED	*	10184-043	SL5521 EOP			
*	90238-022	SA41 ED	*	10210-001	S40 EO			
*	90238-024	SA41 ED	*	10210-002	S40 EO			
*	90238-026	SA41 ED	*	10210-003	S40 EO			
*	90238-028	SA41 ED	*	10210-004	S40 EO			
308-10732-3011	90242-002	SA51 ED	*	10210-005	S40 EO			
308-21132-3011	90242-003	SA51 ED	*	10210-007	S40 EO			
*	90242-004	SA51 ED	*	10210-010	S40 EO			
308-20932-3011	90242-005	SA51 ED	*	10210-012	S40 EO	210-221000-1302	TF-155	
308-21132-3013	90242-006	SA51 ED	*	10210-014	S40 EO	210-221000-1302A	TF-155	
*	90242-008	SA51 ED	*	10210-016	S40 EO	210-221000-1332	TF-155	
308-20134-3052	90242-010	SA51 ED	*	10210-022	S40 EO	210-225000-1331B	TF-155	
308-20732-3013	90242-012	SA51 ED	*	10210-033	S40 EO	210-225010-6334	TF-155	
*	90242-015	SA51 ED	*	10210-035	S40 EO	210-225000-1307	TF-155	
*	90242-016	SA51 ED	*	10222-006	S50 EO	210-225000-1316	TF-155	
*	90242-018	SA51 ED	*	10222-007	S50 EO	210-245000-1308	TF-155	
*	90242-020	SA51 ED	*	10222-011	S50 EO	210-221000-1312B	TF-155	
*	90242-022	SA51 ED	*	10213-003	S60 EO	210-225000-1308	TF-155	
*	90242-024	SA51 ED	*	10213-006	S60 EO	210-225000-1302A	TF-155	
*			*	10213-013	S60 EO	210-221000-6314	TF-155-B	
310-21132-301	90244-001	SA61 ED	*	10213-014	S60 EO	210-225000-6334	TF-155-B	
310-20732-301	90244-002	SA61 ED	*	10213-015	S60 EO	210-221103-1300	TF-155 B	
310-31232-301	90244-003	SA61 ED	*	10213-017	S60 EO	210-221103-1333	TF-155 B	
*	90244-004	SA61 ED	*	10213-024	S60 EO	210-225103-1331A	TF-155 B	
*	90244-006	SA61 ED	*	10213-025	S60 EO	210-225103-1306	TF-155 B	
310-20932-301	90244-007	SA61 ED	*	10213-026	S60 EO	210-225103-1317	TF-155 B	
310-20132-301	90244-010	SA61 ED	*	10213-027	S60 EO	210-245103-1309	TF-155 B	
*	90244-011	SA61 ED	*	10213-028	S60 EO	210-221103-1321	TF-155 B	
*	90244-016	SA61 ED	*	10211-004	SA41 EO	210-225103-1309	TF-155 B	
*	90244-017	SA61 ED	*	10211-006	SA41 EO	210-221103-1300A	TF-155 B	
*	90244-018	SA61 ED	*	10211-007	SA41 EO	210-225000-1322	TF-155 C	
*	90244-019	SA61 ED	*	10211-008	SA41 EO	210-225000-1318	TF-155 J	
*	90244-021	SA61 ED	*	10211-011	SA41 EO	210-225000-1318A	TF-155 J-6	
*	90244-023	SA61 ED	*	10211-012	SA41 EO	210-225300-1313	TF-155 K	
*	90244-025	SA61 ED	*	10211-013	SA41 EO	210-225300-1315	TF-155 L-6	
*	90244-027	SA61 ED	*	10211-014	SA41 EO	210-221002-1303	TF-155 LJ-8	
*	90244-029	SA61 ED	*	10211-021	SA41 EO	210-221001-8310	TF-155 NJ-8	
*	90244-031	SA61 ED	*	10211-022	SA41 EO	210-221020-8320	TF-155 R-35	
*	90244-033	SA61 ED	*	10211-024	SA41 EO	210-245020-8337	TF-155 R-35	
*	90244-035	SA61 ED	*	10211-027	SA41 EO	210-221030-1312A	TF-155 S	
90204-007	CC251 EO		*	10212-001	SA51 EO	210-225201-1323	TF-155 T	
90204-008	CC251 EO		*	10212-002	SA51 EO	210-221201-1301	TF-155 T	
90204-012	CC251 EO		*	10212-004	SA51 EO	210-221201-1301A	TF-155 T-6	
10175-006	CC250 EO		*	10212-005	SA51 EO	210-221201-6304A	TF-155 T-6	
10175-007	CC250 EO		*	10212-006	SA51 EO	210-225201-6331	TF-150	
10175-008	CC250 EO		*	10212-007	SA51 EO	209-221000-1303	TF-150	
10175-023	CC250 EO		*	10212-008	SA51 EO	209-225000-1301	TF-150	
10175-024	CC250 EO		*	10212-009	SA51 EO	209-221000-6306	TF-150-B	
10175-025	CC250 EO		*	10212-010	SA51 EO	209-225103-1302	TF-150 B	
10175-030	CC250 EO		*	10212-011	SA51 EO	209-221103-1304	TF-150 B	
10228-018	SL5421 EOP		*	10212-012	SA51 EO	209-221103-1305	TF-150 B	
10228-024	SL5421 EOP		*	10212-013	SA51 EO	209-221030-1303A	TF-150 S	
10228-029	SL5421 EOP		*	10212-020	SA51 EO			
10229-001	SL5471 EOP		*	10212-021	SA51 EO			
10229-002	SL5471 EOP		*	10212-023	SA51 EO			
10229-004	SL5471 EOP		*	10212-024	SA51 EO			



ORDER 215-708
24V
To Repair
The Following
Controls

ESSEX PART NO. MODEL NO.

210-221000-1302	TF-155
210-221000-1302A	TF-155
210-241000-1320	TF-155
210-221000-1332	TF-155
210-225000-1331B	TF-155
210-225010-6334	TF-155
210-225000-1307	TF-155
210-225000-1316	TF-155
210-245000-1308	TF-155
210-221000-1312B	TF-155
210-225000-1308	TF-155
210-225000-1302A	TF-155
210-221000-6314	TF-155-B
210-225000-6334	TF-155-B
210-221103-1300	TF-155 B
210-221103-1333	TF-155 B
210-225103-1331A	TF-155 B
210-225103-1306	TF-155 B
210-225103-1317	TF-155 B
210-245103-1309	TF-155 B
210-221103-1321	TF-155 B
210-225103-1309	TF-155 B
210-221103-1300A	TF-155 B
210-225000-1322	TF-155 C
210-225000-1318	TF-155 J
210-225000-1318A	TF-155 J
210-225000-6319	TF-155 J-6
210-225300-1313	TF-155 K
210-225300-1315	TF-155 K
210-221002-1303	TF-155 LJ
210-221001-8310	TF-155 NJ-8
210-221020-8320	TF-155 R-35
210-245020-8337	TF-155 R-35
210-221030-1312A	TF-155 S
210-225201-1323	TF-155 T
210-221201-1301	TF-155 T
210-221201-1301A	TF-155 T
210-221201-6304A	TF-155 T-6
210-225201-6331	TF-155 T-6
209-221000-1303	TF-150
209-225000-1301	TF-150
209-221000-6306	TF-150-B
209-225103-1302	TF-150 B
209-221103-1304	TF-150 B
209-221103-1305	TF-150 B
209-221030-1303A	TF-150 S

 <p>ORDER 215-709 120V To Repair The Following Controls</p> <table border="0"> <tr> <td>ESSEX PART NO.</td> <td>MODEL NO.</td> </tr> <tr> <td>210-226000-6331</td> <td>TF-155-6</td> </tr> <tr> <td>210-226000-1322</td> <td>TF-155 C</td> </tr> <tr> <td>210-222430-1329</td> <td>TF-155 FSP</td> </tr> <tr> <td>210-226330-1328</td> <td>TF-155 SPK</td> </tr> <tr> <td>210-226133-1338</td> <td>TF-155 SPK</td> </tr> <tr> <td>210-226330-1327</td> <td>TF-155 SPCK</td> </tr> </table>	ESSEX PART NO.	MODEL NO.	210-226000-6331	TF-155-6	210-226000-1322	TF-155 C	210-222430-1329	TF-155 FSP	210-226330-1328	TF-155 SPK	210-226133-1338	TF-155 SPK	210-226330-1327	TF-155 SPCK	<table border="0"> <tr> <td>ESSEX PART NO.</td> <td>MODEL NO.</td> </tr> <tr> <td>213-445020-6308</td> <td>TF-650 HJ-6</td> </tr> <tr> <td>213-445320-1308</td> <td>TF-650 HK</td> </tr> </table>	ESSEX PART NO.	MODEL NO.	213-445020-6308	TF-650 HJ-6	213-445320-1308	TF-650 HK	<table border="0"> <tr> <td>ESSEX PART NO.</td> <td>MODEL NO.</td> </tr> <tr> <td>227-2311-60</td> <td>227</td> </tr> <tr> <td>227-2312-64</td> <td>227</td> </tr> </table>	ESSEX PART NO.	MODEL NO.	227-2311-60	227	227-2312-64	227																																		
ESSEX PART NO.	MODEL NO.																																																													
210-226000-6331	TF-155-6																																																													
210-226000-1322	TF-155 C																																																													
210-222430-1329	TF-155 FSP																																																													
210-226330-1328	TF-155 SPK																																																													
210-226133-1338	TF-155 SPK																																																													
210-226330-1327	TF-155 SPCK																																																													
ESSEX PART NO.	MODEL NO.																																																													
213-445020-6308	TF-650 HJ-6																																																													
213-445320-1308	TF-650 HK																																																													
ESSEX PART NO.	MODEL NO.																																																													
227-2311-60	227																																																													
227-2312-64	227																																																													
 <p>ORDER 215-710 24V To Repair The Following Controls</p> <table border="0"> <tr> <td>ESSEX PART NO.</td> <td>MODEL NO.</td> </tr> <tr> <td>213-241000-1301</td> <td>TF-650 H</td> </tr> <tr> <td>213-441000-1301</td> <td>TF-650 H</td> </tr> <tr> <td>213-445000-1302</td> <td>TF-650 H</td> </tr> <tr> <td>213-445000-1303</td> <td>TF-650 H</td> </tr> <tr> <td>213-445000-1312</td> <td>TF-650 H</td> </tr> <tr> <td>213-445000-1305</td> <td>TF-650 H</td> </tr> <tr> <td>213-445020-6312</td> <td>TF-650 H-6</td> </tr> <tr> <td>213-441000-6310</td> <td>TF-650 H-6</td> </tr> <tr> <td>213-445103-1304</td> <td>TF-650 HB</td> </tr> <tr> <td>213-445000-1309</td> <td>TF-650 HC</td> </tr> <tr> <td>213-445000-1307</td> <td>TF-650 HJ</td> </tr> </table>	ESSEX PART NO.	MODEL NO.	213-241000-1301	TF-650 H	213-441000-1301	TF-650 H	213-445000-1302	TF-650 H	213-445000-1303	TF-650 H	213-445000-1312	TF-650 H	213-445000-1305	TF-650 H	213-445020-6312	TF-650 H-6	213-441000-6310	TF-650 H-6	213-445103-1304	TF-650 HB	213-445000-1309	TF-650 HC	213-445000-1307	TF-650 HJ	 <p>ORDER 215-711 120V To Repair The Following Controls</p> <table border="0"> <tr> <td>ESSEX PART NO.</td> <td>MODEL NO.</td> </tr> <tr> <td>213-446000-1312</td> <td>TF-650 H</td> </tr> <tr> <td>213-446020-6312</td> <td>TF-650 H-6</td> </tr> <tr> <td>213-446030-1313</td> <td>TF-650 H-6</td> </tr> <tr> <td>213-446000-1309</td> <td>TF-650 HC</td> </tr> <tr> <td>213-446360-1313</td> <td>TF-650 HSPK</td> </tr> </table>	ESSEX PART NO.	MODEL NO.	213-446000-1312	TF-650 H	213-446020-6312	TF-650 H-6	213-446030-1313	TF-650 H-6	213-446000-1309	TF-650 HC	213-446360-1313	TF-650 HSPK	 <p>ORDER 215-713 120V To Repair The Following Controls</p> <table border="0"> <tr> <td>ESSEX PART NO.</td> <td>MODEL NO.</td> </tr> <tr> <td>227-3202-08</td> <td>227</td> </tr> <tr> <td>227-3202-30</td> <td>227</td> </tr> <tr> <td>227-3202-36</td> <td>227</td> </tr> <tr> <td>227-3203-03</td> <td>227</td> </tr> <tr> <td>227-3223-35</td> <td>227</td> </tr> <tr> <td>227-3293-06</td> <td>227</td> </tr> <tr> <td>227-3302-05</td> <td>227</td> </tr> <tr> <td>227-3302-61</td> <td>227</td> </tr> <tr> <td>227-3302-30</td> <td>227</td> </tr> <tr> <td>227-3311-60</td> <td>227</td> </tr> <tr> <td>227-3312-66</td> <td>227</td> </tr> </table>	ESSEX PART NO.	MODEL NO.	227-3202-08	227	227-3202-30	227	227-3202-36	227	227-3203-03	227	227-3223-35	227	227-3293-06	227	227-3302-05	227	227-3302-61	227	227-3302-30	227	227-3311-60	227	227-3312-66	227
ESSEX PART NO.	MODEL NO.																																																													
213-241000-1301	TF-650 H																																																													
213-441000-1301	TF-650 H																																																													
213-445000-1302	TF-650 H																																																													
213-445000-1303	TF-650 H																																																													
213-445000-1312	TF-650 H																																																													
213-445000-1305	TF-650 H																																																													
213-445020-6312	TF-650 H-6																																																													
213-441000-6310	TF-650 H-6																																																													
213-445103-1304	TF-650 HB																																																													
213-445000-1309	TF-650 HC																																																													
213-445000-1307	TF-650 HJ																																																													
ESSEX PART NO.	MODEL NO.																																																													
213-446000-1312	TF-650 H																																																													
213-446020-6312	TF-650 H-6																																																													
213-446030-1313	TF-650 H-6																																																													
213-446000-1309	TF-650 HC																																																													
213-446360-1313	TF-650 HSPK																																																													
ESSEX PART NO.	MODEL NO.																																																													
227-3202-08	227																																																													
227-3202-30	227																																																													
227-3202-36	227																																																													
227-3203-03	227																																																													
227-3223-35	227																																																													
227-3293-06	227																																																													
227-3302-05	227																																																													
227-3302-61	227																																																													
227-3302-30	227																																																													
227-3311-60	227																																																													
227-3312-66	227																																																													
<p>ORDER 215-710 24V To Repair The Following Controls</p> <table border="0"> <tr> <td>ESSEX PART NO.</td> <td>MODEL NO.</td> </tr> <tr> <td>213-241000-1301</td> <td>TF-650 H</td> </tr> <tr> <td>213-441000-1301</td> <td>TF-650 H</td> </tr> <tr> <td>213-445000-1302</td> <td>TF-650 H</td> </tr> <tr> <td>213-445000-1303</td> <td>TF-650 H</td> </tr> <tr> <td>213-445000-1312</td> <td>TF-650 H</td> </tr> <tr> <td>213-445000-1305</td> <td>TF-650 H</td> </tr> <tr> <td>213-445020-6312</td> <td>TF-650 H-6</td> </tr> <tr> <td>213-441000-6310</td> <td>TF-650 H-6</td> </tr> <tr> <td>213-445103-1304</td> <td>TF-650 HB</td> </tr> <tr> <td>213-445000-1309</td> <td>TF-650 HC</td> </tr> <tr> <td>213-445000-1307</td> <td>TF-650 HJ</td> </tr> </table>	ESSEX PART NO.	MODEL NO.	213-241000-1301	TF-650 H	213-441000-1301	TF-650 H	213-445000-1302	TF-650 H	213-445000-1303	TF-650 H	213-445000-1312	TF-650 H	213-445000-1305	TF-650 H	213-445020-6312	TF-650 H-6	213-441000-6310	TF-650 H-6	213-445103-1304	TF-650 HB	213-445000-1309	TF-650 HC	213-445000-1307	TF-650 HJ	 <p>ORDER 215-712 24V To Repair The Following Controls</p> <table border="0"> <tr> <td>ESSEX PART NO.</td> <td>MODEL NO.</td> </tr> <tr> <td>227-2201-01</td> <td>227</td> </tr> <tr> <td>227-2202-04</td> <td>227</td> </tr> <tr> <td>227-2202-36</td> <td>227</td> </tr> <tr> <td>227-2221-01</td> <td>227</td> </tr> <tr> <td>227-2301-01</td> <td>227</td> </tr> <tr> <td>227-2301-02</td> <td>227</td> </tr> <tr> <td>227-2302-04</td> <td>227</td> </tr> <tr> <td>227-2311-01</td> <td>227</td> </tr> </table>	ESSEX PART NO.	MODEL NO.	227-2201-01	227	227-2202-04	227	227-2202-36	227	227-2221-01	227	227-2301-01	227	227-2301-02	227	227-2302-04	227	227-2311-01	227	 <p>ORDER 215-714 24V To Repair The Following Controls</p> <table border="0"> <tr> <td>ESSEX PART NO.</td> <td>MODEL NO.</td> </tr> <tr> <td>All 211 Series</td> <td>TF-555</td> </tr> <tr> <td>All 212 Series</td> <td>TF-600</td> </tr> <tr> <td>All 228 Series</td> <td>228</td> </tr> </table>	ESSEX PART NO.	MODEL NO.	All 211 Series	TF-555	All 212 Series	TF-600	All 228 Series	228										
ESSEX PART NO.	MODEL NO.																																																													
213-241000-1301	TF-650 H																																																													
213-441000-1301	TF-650 H																																																													
213-445000-1302	TF-650 H																																																													
213-445000-1303	TF-650 H																																																													
213-445000-1312	TF-650 H																																																													
213-445000-1305	TF-650 H																																																													
213-445020-6312	TF-650 H-6																																																													
213-441000-6310	TF-650 H-6																																																													
213-445103-1304	TF-650 HB																																																													
213-445000-1309	TF-650 HC																																																													
213-445000-1307	TF-650 HJ																																																													
ESSEX PART NO.	MODEL NO.																																																													
227-2201-01	227																																																													
227-2202-04	227																																																													
227-2202-36	227																																																													
227-2221-01	227																																																													
227-2301-01	227																																																													
227-2301-02	227																																																													
227-2302-04	227																																																													
227-2311-01	227																																																													
ESSEX PART NO.	MODEL NO.																																																													
All 211 Series	TF-555																																																													
All 212 Series	TF-600																																																													
All 228 Series	228																																																													

Conversion Kits

ORDER THIS CATALOG NUMBER	TO CONVERT FROM NATURAL TO LP ON THE FOLLOWING CONTROLS
215-800 215-801 215-802 215-803	T-40 T-50 CC252 EM, CC252 DE, CC250 EM, CC250 DE VR-1, TROD, SL100, SL101, SL101 P, SLS401 EO, SLS401 DE, SLS401 EOP, SLS401 EDP, SLS406 EO, SLS406 DE, SLS406 EOP, SLS406 DEP, SLS421 EO, SLS421 DE, SLS421 EOP, SLS421 DEP, SLS426 EO, SLS426 DE, SLS426 EOP, SLS426 DEP, SLS471 EO, SLS471 DE, SLS471 EOP, SLS471 DEP, SLS476 EO, SLS476 DE, SLS476 EOP, SLS476 DEP
215-804	T-11M, T-11L, SL201, SL201 P, SLS521 EO, SLS521 DE, SLS521 EOP, SLS521 DEP, SLS526 EO, SLS526 DE, SLS526 EOP, SLS526 DEP
215-805	T-30, SL301, SL301 P
215-806	CC166 EM, CC168 EM
215-807	CC251 EM, CC251 DE, CC251 ED, CC253 EM, CC253 DE, CC253 ED
215-808	T-10
215-809	T-60
215-810	T-70
215-811	TF-5, TF-50
215-812	TF-155, TF-555, TF-600 H, TF-650 H
215-813	TF-155 F, TF-555 F, TF-600 HF, TF-650 HF

ESSEX INTERNATIONAL, INC.



OPERATORS			OPERATORS			OPERATORS		
CATALOG NUMBER	ESSEX PART NO.	CCA PART NO.	CATALOG NUMBER	ESSEX PART NO.	CCA PART NO.	CATALOG NUMBER	ESSEX PART NO.	CCA PART NO.
215-706	*	179795-51	215-707	*	179630-4	215-709	190-3002-13	*
215-706	*	179795-61	215-707	*	179630-8	215-709	190-3002-26	*
215-706	*	179795-71	215-707	*	179630-9	215-709	190-3003-11	*
215-706	*	179795-2	215-707	*	179630-14	25 V		
215-706	*	179795-12	215-707	*	179630-16	215-710	190-2801-20	*
215-706	*	179795-22	215-707	*	179630-18	215-710	190-2802-10	*
215-706	*	179795-32	215-707	*	179630-22	215-710	190-2802-26	*
215-706	*	179795-42	215-707	*	179630-36	215-710	190-2803-26	*
215-706	*	179795-52	215-707	*	179795-6	120V		
215-706	*	179795-62	215-707	*	179795-16	215-711	190-3892-10	*
215-706	*	179795-72	215-707	*	179795-26	215-711	190-3803-11	*
215-706	*	T102	215-707	*	179795-36	CONVERSION KITS Natural to LP		
215-706	*	T122	215-707	*	179795-46			
215-706	*	T132	215-707	*	179795-56			
215-706	*	T123	215-707	*	179795-66			
215-706	*	T232	215-707	*	179795-76			
215-706	*	T223	215-707	*	T110			
120V ED			215-707	*	T160			
215-707	*	19189-6	215-707	*	T210			
215-707	*	19189-7	215-707	*	T260			
215-707	*	19189-8	25V					
215-707	*	19189-13	215-708	190-2001-20	*			
215-707	*	19189-19	215-708	190-2001-23	*			
215-707	*	19189-20	215-708	190-2002-10	*			
215-707	*	19189-22	215-708	190-2002-26	*			
215-707	*	19189-27	215-708	190-2003-26	*			
215-707	*	19189-31	120V					
215-707	*	19189-36	215-709	190-3001-20	*			
215-707	*	19189-38	215-709	190-3001-23	*			
215-707	*	19189-43	215-709	190-3002-10	*			
215-707	*	19189-49						

* Indicates No Part Number For This Control.



**SERVING THE AIR CONDITIONING, REFRIGERATION,
HEATING AND APPLIANCE INDUSTRIES**



Interchange—Essex Replacement Cross Reference

ORDER 215-100 Manual ¾ x ¾ To Replace			ORDER 215-103 Manual 1 x 1 To Replace			ORDER 215-202 Pilot Valve To Replace		
ESSEX PART NO.	CCA PART NO.	MODEL NO.	ESSEX PART NO.	CCA PART NO.	MODEL NO.	ESSEX PART NO.	CCA PART NO.	MODEL NO.
208-12211	10195-005	300	223-122241	10197-001	500	230-6141	10199-005	P-2 S
208-14211	10195-010	300	223-122221	10197-002	500	230-6241	10199-006	P-2 ST
208-14211	10195-017	300	223-142121	10197-003	500	230-6211	10199-007	P-2 ST
208-15311	10195-022	300	223-142111	10197-004	500			
	10195-023	300	*	10197-005	500			
208-14111	10195-027	300	223-122231	10197-006	500			
*	10195-028	300	223-122111	10197-007	500			
*	10195-030	300	223-132241	10197-009	500			
			223-122221	10197-010	500			
			*	10197-012	500			
			223-142131	10197-013	500			
			223-142141	10197-014	500			
			223-153131	10197-016	500			
			*	10197-017	500			
			223-121143	10197-021	500			
ORDER 215-101 Manual 1½ x ½ To Replace			ORDER 215-104 Manual 1¼ x 1¼ To Replace			ORDER 215-300 Regulator ½ x ½ To Replace		
ESSEX PART NO.	CCA PART NO.	MODEL NO.	ESSEX PART NO.	CCA PART NO.	MODEL NO.	ESSEX PART NO.	CCA PART NO.	MODEL NO.
208-22211	10195-001	300	224-132111	10198-001	600	231-111011-111	10200-006	TROD
208-24212	10195-002	300	224-122231	10198-002	600	231-111012-111	10200-007	TROD
208-23212	10195-003	300	224-122241	10198-003	600	231-111001-127	10200-008	TROD
*	10195-006	300	224-142111	10198-004	600	231-111002-104	10200-027	TROD
*	10195-007	300	224-132141	10198-005	600	231-111019-147	10200-030	TROD
208-23211	10195-008	300	224-122211	10198-006	600	*	10200-034	TROD
*	10195-009	300	224-132141	10198-007	600	231-111011-126	10200-051	TROD
*	10195-011	300	224-122211	10198-008	600	*	10200-055	TROD
*	10195-012	300	*	10198-009	600	231-111002-129	10200-057	TROD
*	10195-015	300	224-142141	10198-011	600	231-111002-111	10200-078	TROD
*	10195-018	300	224-122221	10198-012	600	231-111002-144	10200-124	TROD
*	10195-020	300	224-141131	10198-013	600			
*	10195-021	300	*	10198-014	600			
208-22213	10195-025	300						
208-22111	10195-026	300						
208-21311	10195-029	300						
*	10195-031	300						
*	10195-032	300						
ORDER 215-102 Manual ¾ x ¾ To Replace			ORDER 215-200 Pilot Valve To Replace			ORDER 215-301 Regulator ¾ x ¾ To Replace		
ESSEX PART NO.	CCA PART NO.	MODEL NO.	ESSEX PART NO.	CCA PART NO.	MODEL NO.	ESSEX PART NO.	CCA PART NO.	MODEL NO.
216-222211	10196-004	400	230-5141	10199-001	P-2 L	231-161011-122	10200-010	TROD
216-222231	10196-005	400	230-5241	10199-003	P-2 LT	231-161011-136	10200-049	TROD
216-232241	10196-006	400	*	10199-009	P-2 LT	231-161002-109	10200-073	TROD
216-232221	10196-007	400	*	10199-013	P-2 L	231-161001-105	10200-074	TROD
216-242221	10196-008	400	230-5121	10199-019	P-2 L	*	10200-077	TROD
216-242111	10196-009	400	230-5221	10199-021	P-2 LT	231-161002-113	10200-117	TROD
*	10196-011	400	230-5161	10199-023	P-2 L	*	10200-126	TROD
216-232213	10196-012	400	230-5261	10199-024	P-2 LT	231-161006-105	10200-132	TROD
216-222143	10196-013	400				231-161508-115	10200-141	TROD
216-222241	10196-014	400				*	10200-142	TROD
*	10196-015	400				231-161002-124	10200-143	TROD
216-253131	10196-016	400				*	10200-151	TROD
*	10196-017	400						
216-253121	10196-018	400						
*	10196-019	400						
216-232231	10196-021	400						
216-242141	10196-022	400						
*	10196-023	400						
*	10196-028	400						
*	10196-030	400						
*	10196-031	400						
*	10196-032	400						
*	10196-035	400						
*	10196-037	400						
216-221141	10196-044	400						
216-232121	10196-045	400						
*	10196-046	400						
216-242111	10196-047	400						
216-222121	10196-048	400						
ORDER 215-101 Manual 1½ x ½ To Replace			ORDER 215-200 Pilot Valve To Replace			ORDER 215-302 Regulator ½ x ½ To Replace		
ESSEX PART NO.	CCA PART NO.	MODEL NO.	ESSEX PART NO.	CCA PART NO.	MODEL NO.	ESSEX PART NO.	CCA PART NO.	MODEL NO.
208-22211	10195-001	300	230-4141	10199-002	P-2 R	231-181027-137	10200-011	TROD
208-24212	10195-002	300	230-4241	10199-004	P-2 RT	231-181011-137	10200-013	TROD
208-23212	10195-003	300	230-4121	10199-020	P-2 R	231-181002-137	10200-014	TROD
*	10195-006	300	230-4221	10199-022	P-2 RT	231-181011-123	10200-015	TROD
*	10195-007	300				*	10200-016	TROD
208-23211	10195-008	300				231-181013-123	10200-017	TROD
*	10195-009	300				*	10200-018	TROD
*	10195-011	300				*	10200-028	TROD
*	10195-012	300				*	10200-036	TROD
*	10195-015	300				231-181009-123	10200-048	TROD
*	10195-018	300				231-181002-114	10200-076	TROD
*	10195-020	300				*	10200-079	TROD
*	10195-021	300				*	10200-086	TROD
208-22213	10195-025	300				231-181002-106	10200-104	TROD
208-22111	10195-026	300				231-181002-124	10200-115	TROD
208-21311	10195-029	300				231-181002-119	10200-121	TROD
*	10195-031	300				*	10200-127	TROD
*	10195-032	300						

* Indicates No Part Number For This Control.

Interchange - Essex Replacement Cross Reference

<table border="1"> <thead> <tr> <th>ESSEX PART NO.</th> <th>CCA PART NO.</th> <th>MODEL NO.</th> </tr> </thead> <tbody> <tr><td>*</td><td>10219-006</td><td>VR-1</td></tr> <tr><td>*</td><td>10219-007</td><td>VR-1</td></tr> <tr><td>*</td><td>10219-008</td><td>VR-1</td></tr> <tr><td>*</td><td>10219-012</td><td>VR-1</td></tr> <tr><td>*</td><td>10219-014</td><td>VR-1</td></tr> <tr><td>277-341211-110</td><td>10219-016</td><td>VR-1</td></tr> <tr><td>277-341211-103</td><td>10219-017</td><td>VR-1</td></tr> <tr><td>*</td><td>10219-020</td><td>VR-1</td></tr> <tr><td>277-321203-111</td><td>10219-022</td><td>VR-1</td></tr> <tr><td>277-321203-113</td><td>10219-024</td><td>VR-1</td></tr> <tr><td>277-321211-115</td><td>10219-029</td><td>VR-1</td></tr> <tr><td>277-321203-103</td><td>10219-030</td><td>VR-1</td></tr> <tr><td>*</td><td>10219-031</td><td>VR-1</td></tr> <tr><td>277-341203-103</td><td>10219-033</td><td>VR-1</td></tr> <tr><td>277-372103-101</td><td>10219-034</td><td>VR-1</td></tr> <tr><td>277-341203-116</td><td>10219-042</td><td>VR-1</td></tr> </tbody> </table>	ESSEX PART NO.	CCA PART NO.	MODEL NO.	*	10219-006	VR-1	*	10219-007	VR-1	*	10219-008	VR-1	*	10219-012	VR-1	*	10219-014	VR-1	277-341211-110	10219-016	VR-1	277-341211-103	10219-017	VR-1	*	10219-020	VR-1	277-321203-111	10219-022	VR-1	277-321203-113	10219-024	VR-1	277-321211-115	10219-029	VR-1	277-321203-103	10219-030	VR-1	*	10219-031	VR-1	277-341203-103	10219-033	VR-1	277-372103-101	10219-034	VR-1	277-341203-116	10219-042	VR-1	<table border="1"> <thead> <tr> <th>ESSEX PART NO.</th> <th>CCA PART NO.</th> <th>MODEL NO.</th> </tr> </thead> <tbody> <tr><td>*</td><td>90236-031</td><td>S40 EDLR</td></tr> <tr><td>*</td><td>10218-007</td><td>S40 DE</td></tr> </tbody> </table>	ESSEX PART NO.	CCA PART NO.	MODEL NO.	*	90236-031	S40 EDLR	*	10218-007	S40 DE	<table border="1"> <thead> <tr> <th>ESSEX PART NO.</th> <th>CCA PART NO.</th> <th>MODEL NO.</th> </tr> </thead> <tbody> <tr><td>309-30111-220</td><td>90243-009</td><td>S60 EDR</td></tr> <tr><td>*</td><td>90243-020</td><td>S60 EDR</td></tr> </tbody> </table>	ESSEX PART NO.	CCA PART NO.	MODEL NO.	309-30111-220	90243-009	S60 EDR	*	90243-020	S60 EDR
ESSEX PART NO.	CCA PART NO.	MODEL NO.																																																																					
*	10219-006	VR-1																																																																					
*	10219-007	VR-1																																																																					
*	10219-008	VR-1																																																																					
*	10219-012	VR-1																																																																					
*	10219-014	VR-1																																																																					
277-341211-110	10219-016	VR-1																																																																					
277-341211-103	10219-017	VR-1																																																																					
*	10219-020	VR-1																																																																					
277-321203-111	10219-022	VR-1																																																																					
277-321203-113	10219-024	VR-1																																																																					
277-321211-115	10219-029	VR-1																																																																					
277-321203-103	10219-030	VR-1																																																																					
*	10219-031	VR-1																																																																					
277-341203-103	10219-033	VR-1																																																																					
277-372103-101	10219-034	VR-1																																																																					
277-341203-116	10219-042	VR-1																																																																					
ESSEX PART NO.	CCA PART NO.	MODEL NO.																																																																					
*	90236-031	S40 EDLR																																																																					
*	10218-007	S40 DE																																																																					
ESSEX PART NO.	CCA PART NO.	MODEL NO.																																																																					
309-30111-220	90243-009	S60 EDR																																																																					
*	90243-020	S60 EDR																																																																					
<p>ORDER 215-400 Automatic Valve ¾ x ¾, 24 V To Replace</p> <table border="1"> <thead> <tr> <th>ESSEX PART NO.</th> <th>MODEL NO.</th> </tr> </thead> <tbody> <tr><td>190-2301-06</td><td>3824-AT</td></tr> <tr><td>190-2301-07</td><td>3824-AT</td></tr> <tr><td>190-2302-04</td><td>3824-A</td></tr> <tr><td>190-2311-01</td><td>3824-AT2</td></tr> <tr><td>190-2311-02</td><td>3824-2T</td></tr> <tr><td>190-2312-02</td><td>3824-2</td></tr> </tbody> </table>	ESSEX PART NO.	MODEL NO.	190-2301-06	3824-AT	190-2301-07	3824-AT	190-2302-04	3824-A	190-2311-01	3824-AT2	190-2311-02	3824-2T	190-2312-02	3824-2	<table border="1"> <thead> <tr> <th>ESSEX PART NO.</th> <th>CCA PART NO.</th> <th>MODEL NO.</th> </tr> </thead> <tbody> <tr><td>*</td><td>90236-020</td><td>S40 EDLR</td></tr> <tr><td>*</td><td>90236-034</td><td>S40 EDLR</td></tr> <tr><td>*</td><td>10218-005</td><td>S40 DE</td></tr> <tr><td>*</td><td>10218-008</td><td>S40 DE</td></tr> <tr><td>*</td><td>10210-010</td><td>S40 EO</td></tr> </tbody> </table>	ESSEX PART NO.	CCA PART NO.	MODEL NO.	*	90236-020	S40 EDLR	*	90236-034	S40 EDLR	*	10218-005	S40 DE	*	10218-008	S40 DE	*	10210-010	S40 EO	<table border="1"> <thead> <tr> <th>ESSEX PART NO.</th> <th>CCA PART NO.</th> <th>MODEL NO.</th> </tr> </thead> <tbody> <tr><td>309-30111-303</td><td>90243-016</td><td>S60 EDR</td></tr> <tr><td>309-30111-301</td><td>90243-024</td><td>S60 EDR</td></tr> </tbody> </table>	ESSEX PART NO.	CCA PART NO.	MODEL NO.	309-30111-303	90243-016	S60 EDR	309-30111-301	90243-024	S60 EDR																												
ESSEX PART NO.	MODEL NO.																																																																						
190-2301-06	3824-AT																																																																						
190-2301-07	3824-AT																																																																						
190-2302-04	3824-A																																																																						
190-2311-01	3824-AT2																																																																						
190-2311-02	3824-2T																																																																						
190-2312-02	3824-2																																																																						
ESSEX PART NO.	CCA PART NO.	MODEL NO.																																																																					
*	90236-020	S40 EDLR																																																																					
*	90236-034	S40 EDLR																																																																					
*	10218-005	S40 DE																																																																					
*	10218-008	S40 DE																																																																					
*	10210-010	S40 EO																																																																					
ESSEX PART NO.	CCA PART NO.	MODEL NO.																																																																					
309-30111-303	90243-016	S60 EDR																																																																					
309-30111-301	90243-024	S60 EDR																																																																					
<p>ORDER 215-401 Automatic Valve ¾ x ¾, 120 V To Replace</p> <table border="1"> <thead> <tr> <th>ESSEX PART NO.</th> <th>MODEL NO.</th> </tr> </thead> <tbody> <tr><td>190-3302-05</td><td>3815-1</td></tr> <tr><td>190-3302-07</td><td>3815-2</td></tr> <tr><td>190-3302-30</td><td>3815-1</td></tr> <tr><td>190-3311-02</td><td>3815-3T</td></tr> <tr><td>190-3312-02</td><td>3815-3</td></tr> </tbody> </table>	ESSEX PART NO.	MODEL NO.	190-3302-05	3815-1	190-3302-07	3815-2	190-3302-30	3815-1	190-3311-02	3815-3T	190-3312-02	3815-3	<table border="1"> <thead> <tr> <th>ESSEX PART NO.</th> <th>CCA PART NO.</th> <th>MODEL NO.</th> </tr> </thead> <tbody> <tr><td>*</td><td>90236-032</td><td>S40 EDR</td></tr> <tr><td>*</td><td>10218-002</td><td>S40 DE</td></tr> <tr><td>*</td><td>10218-003</td><td>S40 DE</td></tr> <tr><td>*</td><td>10218-006</td><td>S40 DE</td></tr> </tbody> </table>	ESSEX PART NO.	CCA PART NO.	MODEL NO.	*	90236-032	S40 EDR	*	10218-002	S40 DE	*	10218-003	S40 DE	*	10218-006	S40 DE	<table border="1"> <thead> <tr> <th>ESSEX PART NO.</th> <th>MODEL NO.</th> </tr> </thead> <tbody> <tr><td>209-221000-1303</td><td>TF-150</td></tr> <tr><td>209-225000-1301</td><td>TF-150</td></tr> <tr><td>210-221000-1302</td><td>TF-155</td></tr> <tr><td>210-221000-1302A</td><td>TF-155</td></tr> <tr><td>210-221000-1332</td><td>TF-155</td></tr> <tr><td>210-225000-1307</td><td>TF-155</td></tr> <tr><td>210-225000-1316</td><td>TF-155</td></tr> <tr><td>210-241000-1320</td><td>TF-155</td></tr> <tr><td>210-245000-1308</td><td>TF-155</td></tr> <tr><td>210-221000-1312B</td><td>TF-155</td></tr> <tr><td>210-225000-1308</td><td>TF-155</td></tr> <tr><td>210-225000-1318</td><td>TF-155J</td></tr> <tr><td>210-225000-1318A</td><td>TF-155J</td></tr> <tr><td>210-225000-1322</td><td>TF-155C</td></tr> </tbody> </table>	ESSEX PART NO.	MODEL NO.	209-221000-1303	TF-150	209-225000-1301	TF-150	210-221000-1302	TF-155	210-221000-1302A	TF-155	210-221000-1332	TF-155	210-225000-1307	TF-155	210-225000-1316	TF-155	210-241000-1320	TF-155	210-245000-1308	TF-155	210-221000-1312B	TF-155	210-225000-1308	TF-155	210-225000-1318	TF-155J	210-225000-1318A	TF-155J	210-225000-1322	TF-155C												
ESSEX PART NO.	MODEL NO.																																																																						
190-3302-05	3815-1																																																																						
190-3302-07	3815-2																																																																						
190-3302-30	3815-1																																																																						
190-3311-02	3815-3T																																																																						
190-3312-02	3815-3																																																																						
ESSEX PART NO.	CCA PART NO.	MODEL NO.																																																																					
*	90236-032	S40 EDR																																																																					
*	10218-002	S40 DE																																																																					
*	10218-003	S40 DE																																																																					
*	10218-006	S40 DE																																																																					
ESSEX PART NO.	MODEL NO.																																																																						
209-221000-1303	TF-150																																																																						
209-225000-1301	TF-150																																																																						
210-221000-1302	TF-155																																																																						
210-221000-1302A	TF-155																																																																						
210-221000-1332	TF-155																																																																						
210-225000-1307	TF-155																																																																						
210-225000-1316	TF-155																																																																						
210-241000-1320	TF-155																																																																						
210-245000-1308	TF-155																																																																						
210-221000-1312B	TF-155																																																																						
210-225000-1308	TF-155																																																																						
210-225000-1318	TF-155J																																																																						
210-225000-1318A	TF-155J																																																																						
210-225000-1322	TF-155C																																																																						
<p>ORDER 215-402 Automatic Valve ½ x ½, 24 V To Replace</p> <table border="1"> <thead> <tr> <th>ESSEX PART NO.</th> <th>MODEL NO.</th> </tr> </thead> <tbody> <tr><td>190-2201-05</td><td>1224-AT</td></tr> <tr><td>190-2202-08</td><td>1224-A</td></tr> <tr><td>190-2202-36</td><td>1224-A</td></tr> <tr><td>190-2221-01</td><td>1224-AT2</td></tr> </tbody> </table>	ESSEX PART NO.	MODEL NO.	190-2201-05	1224-AT	190-2202-08	1224-A	190-2202-36	1224-A	190-2221-01	1224-AT2	<table border="1"> <thead> <tr> <th>ESSEX PART NO.</th> <th>CCA PART NO.</th> <th>MODEL NO.</th> </tr> </thead> <tbody> <tr><td>305-401302-1</td><td>90236-004</td><td>S40 EDR</td></tr> <tr><td>305-401302-2</td><td>90236-035</td><td>S40 EDR</td></tr> <tr><td>*</td><td>10218-001</td><td>S40 DE</td></tr> <tr><td>*</td><td>10218-004</td><td>S40 DE</td></tr> <tr><td>*</td><td>10210-001</td><td>S40 EO</td></tr> </tbody> </table>	ESSEX PART NO.	CCA PART NO.	MODEL NO.	305-401302-1	90236-004	S40 EDR	305-401302-2	90236-035	S40 EDR	*	10218-001	S40 DE	*	10218-004	S40 DE	*	10210-001	S40 EO	<table border="1"> <thead> <tr> <th>ESSEX PART NO.</th> <th>MODEL NO.</th> </tr> </thead> <tbody> <tr><td>211-221000-1301</td><td>TF-555</td></tr> <tr><td>211-221000-1301A</td><td>TF-555</td></tr> <tr><td>211-221000-1302</td><td>TF-555</td></tr> <tr><td>211-221000-1304</td><td>TF-555</td></tr> <tr><td>211-221000-1304A</td><td>TF-555</td></tr> <tr><td>211-221000-1307</td><td>TF-555</td></tr> <tr><td>211-241000-1301B</td><td>TF-555</td></tr> <tr><td>211-241000-1301C</td><td>TF-555</td></tr> <tr><td>211-221010-1301</td><td>TF-555</td></tr> <tr><td>211-221010-1304</td><td>TF-555</td></tr> </tbody> </table>	ESSEX PART NO.	MODEL NO.	211-221000-1301	TF-555	211-221000-1301A	TF-555	211-221000-1302	TF-555	211-221000-1304	TF-555	211-221000-1304A	TF-555	211-221000-1307	TF-555	211-241000-1301B	TF-555	211-241000-1301C	TF-555	211-221010-1301	TF-555	211-221010-1304	TF-555																			
ESSEX PART NO.	MODEL NO.																																																																						
190-2201-05	1224-AT																																																																						
190-2202-08	1224-A																																																																						
190-2202-36	1224-A																																																																						
190-2221-01	1224-AT2																																																																						
ESSEX PART NO.	CCA PART NO.	MODEL NO.																																																																					
305-401302-1	90236-004	S40 EDR																																																																					
305-401302-2	90236-035	S40 EDR																																																																					
*	10218-001	S40 DE																																																																					
*	10218-004	S40 DE																																																																					
*	10210-001	S40 EO																																																																					
ESSEX PART NO.	MODEL NO.																																																																						
211-221000-1301	TF-555																																																																						
211-221000-1301A	TF-555																																																																						
211-221000-1302	TF-555																																																																						
211-221000-1304	TF-555																																																																						
211-221000-1304A	TF-555																																																																						
211-221000-1307	TF-555																																																																						
211-241000-1301B	TF-555																																																																						
211-241000-1301C	TF-555																																																																						
211-221010-1301	TF-555																																																																						
211-221010-1304	TF-555																																																																						
<p>ORDER 215-403 Automatic Valve ½ x ½, 120 V To Replace</p> <table border="1"> <thead> <tr> <th>ESSEX PART NO.</th> <th>MODEL NO.</th> </tr> </thead> <tbody> <tr><td>190-3202-08</td><td>1215-1</td></tr> <tr><td>190-3202-30</td><td>1215-1</td></tr> <tr><td>190-3202-36</td><td>1215</td></tr> <tr><td>190-3203-03</td><td>1215-B1</td></tr> <tr><td>190-3223-35</td><td>1215-B1</td></tr> </tbody> </table>	ESSEX PART NO.	MODEL NO.	190-3202-08	1215-1	190-3202-30	1215-1	190-3202-36	1215	190-3203-03	1215-B1	190-3223-35	1215-B1	<table border="1"> <thead> <tr> <th>ESSEX PART NO.</th> <th>CCA PART NO.</th> <th>MODEL NO.</th> </tr> </thead> <tbody> <tr><td>309-20111-220</td><td>90243-008</td><td>S60 EDR</td></tr> <tr><td>*</td><td>90243-019</td><td>S60 EDR</td></tr> </tbody> </table>	ESSEX PART NO.	CCA PART NO.	MODEL NO.	309-20111-220	90243-008	S60 EDR	*	90243-019	S60 EDR	<table border="1"> <thead> <tr> <th>ESSEX PART NO.</th> <th>CCA PART NO.</th> <th>MODEL NO.</th> </tr> </thead> <tbody> <tr><td>286-22301-108</td><td>90203-001</td><td>CC166EM</td></tr> <tr><td>286-22201-107</td><td>90203-009</td><td>CC166EM</td></tr> <tr><td>*</td><td>90203-010</td><td>CC166EM</td></tr> </tbody> </table>	ESSEX PART NO.	CCA PART NO.	MODEL NO.	286-22301-108	90203-001	CC166EM	286-22201-107	90203-009	CC166EM	*	90203-010	CC166EM																																				
ESSEX PART NO.	MODEL NO.																																																																						
190-3202-08	1215-1																																																																						
190-3202-30	1215-1																																																																						
190-3202-36	1215																																																																						
190-3203-03	1215-B1																																																																						
190-3223-35	1215-B1																																																																						
ESSEX PART NO.	CCA PART NO.	MODEL NO.																																																																					
309-20111-220	90243-008	S60 EDR																																																																					
*	90243-019	S60 EDR																																																																					
ESSEX PART NO.	CCA PART NO.	MODEL NO.																																																																					
286-22301-108	90203-001	CC166EM																																																																					
286-22201-107	90203-009	CC166EM																																																																					
*	90203-010	CC166EM																																																																					
<p>ORDER 215-409 Automatic Valve 1 ¼ x 1 ¼, 120 V To Replace</p> <table border="1"> <thead> <tr> <th>ESSEX PART NO.</th> <th>CCA PART NO.</th> <th>MODEL NO.</th> </tr> </thead> <tbody> <tr><td>309-20111-303</td><td>90243-006</td><td>S60 EDR</td></tr> <tr><td>309-20111-301</td><td>90243-023</td><td>S60 EDR</td></tr> </tbody> </table>	ESSEX PART NO.	CCA PART NO.	MODEL NO.	309-20111-303	90243-006	S60 EDR	309-20111-301	90243-023	S60 EDR	<table border="1"> <thead> <tr> <th>ESSEX PART NO.</th> <th>CCA PART NO.</th> <th>MODEL NO.</th> </tr> </thead> <tbody> <tr><td>286-22301-108</td><td>90203-001</td><td>CC166EM</td></tr> <tr><td>286-22201-107</td><td>90203-009</td><td>CC166EM</td></tr> <tr><td>*</td><td>90203-010</td><td>CC166EM</td></tr> </tbody> </table>	ESSEX PART NO.	CCA PART NO.	MODEL NO.	286-22301-108	90203-001	CC166EM	286-22201-107	90203-009	CC166EM	*	90203-010	CC166EM	<p>All TF-500 Series</p>																																																
ESSEX PART NO.	CCA PART NO.	MODEL NO.																																																																					
309-20111-303	90243-006	S60 EDR																																																																					
309-20111-301	90243-023	S60 EDR																																																																					
ESSEX PART NO.	CCA PART NO.	MODEL NO.																																																																					
286-22301-108	90203-001	CC166EM																																																																					
286-22201-107	90203-009	CC166EM																																																																					
*	90203-010	CC166EM																																																																					

* Indicates No Part Number For This Control.

Interchange — Essex Replacement Cross Reference

<table border="1"> <thead> <tr> <th>ESSEX PART NO.</th> <th>CCA PART NO.</th> <th>MODEL NO.</th> </tr> </thead> <tbody> <tr><td>286-12401-104</td><td>90203-014</td><td>CC166EM</td></tr> <tr><td>286-22903-102</td><td>90203-016</td><td>CC166EM</td></tr> <tr><td>286-22903-105</td><td>90203-017</td><td>CC166EM</td></tr> <tr><td>*</td><td>90203-025</td><td>CC166EM</td></tr> <tr><td>*</td><td>90203-026</td><td>CC166EM</td></tr> <tr><td>286-12204-106</td><td>90203-029</td><td>CC166EM</td></tr> <tr><td>*</td><td>90203-030</td><td>CC166EM</td></tr> <tr><td>*</td><td>90213-001</td><td>CC166EMT</td></tr> <tr><td>*</td><td>90213-002</td><td>CC166EMT</td></tr> <tr><td>*</td><td>90213-003</td><td>CC166EMT</td></tr> <tr><td>*</td><td>90213-004</td><td>CC166EMT</td></tr> <tr><td>*</td><td>90213-005</td><td>CC166EMT</td></tr> <tr><td>*</td><td>90214-001</td><td>CC166EH</td></tr> <tr><td>*</td><td>90214-003</td><td>CC166EH</td></tr> </tbody> </table>	ESSEX PART NO.	CCA PART NO.	MODEL NO.	286-12401-104	90203-014	CC166EM	286-22903-102	90203-016	CC166EM	286-22903-105	90203-017	CC166EM	*	90203-025	CC166EM	*	90203-026	CC166EM	286-12204-106	90203-029	CC166EM	*	90203-030	CC166EM	*	90213-001	CC166EMT	*	90213-002	CC166EMT	*	90213-003	CC166EMT	*	90213-004	CC166EMT	*	90213-005	CC166EMT	*	90214-001	CC166EH	*	90214-003	CC166EH	<table border="1"> <thead> <tr> <th colspan="3">ORDER 215-506 Combination Control ¾ x ¾, 120 V To Replace</th> </tr> <tr> <th>ESSEX PART NO.</th> <th>CCA PART NO.</th> <th>MODEL NO.</th> </tr> </thead> <tbody> <tr><td>285-23061-110</td><td>90202-016</td><td>CC251EM</td></tr> <tr><td>*</td><td>10226-012</td><td>CC250EM</td></tr> <tr><td>*</td><td>10226-021</td><td>CC250EM</td></tr> <tr><td>*</td><td>10227-015</td><td>CC250DE</td></tr> <tr><td>*</td><td>90209-001</td><td>CC251DE</td></tr> <tr><td>288-1202-103</td><td>90209-003</td><td>CC251DE</td></tr> <tr><td>*</td><td>90221-024</td><td>CC251ED</td></tr> </tbody> </table>	ORDER 215-506 Combination Control ¾ x ¾, 120 V To Replace			ESSEX PART NO.	CCA PART NO.	MODEL NO.	285-23061-110	90202-016	CC251EM	*	10226-012	CC250EM	*	10226-021	CC250EM	*	10227-015	CC250DE	*	90209-001	CC251DE	288-1202-103	90209-003	CC251DE	*	90221-024	CC251ED	<table border="1"> <thead> <tr> <th colspan="2">ARKLA AIR CONDITIONING</th> </tr> <tr> <th>TO REPLACE</th> <th>ORDER CATALOG NO.</th> </tr> </thead> <tbody> <tr><td>35691-5</td><td>215-104</td></tr> <tr><td>35691-2</td><td>215-101</td></tr> <tr><td>35691-3</td><td>215-102</td></tr> <tr><td>35691-75</td><td>215-202</td></tr> </tbody> </table>	ARKLA AIR CONDITIONING		TO REPLACE	ORDER CATALOG NO.	35691-5	215-104	35691-2	215-101	35691-3	215-102	35691-75	215-202																																														
ESSEX PART NO.	CCA PART NO.	MODEL NO.																																																																																																																																		
286-12401-104	90203-014	CC166EM																																																																																																																																		
286-22903-102	90203-016	CC166EM																																																																																																																																		
286-22903-105	90203-017	CC166EM																																																																																																																																		
*	90203-025	CC166EM																																																																																																																																		
*	90203-026	CC166EM																																																																																																																																		
286-12204-106	90203-029	CC166EM																																																																																																																																		
*	90203-030	CC166EM																																																																																																																																		
*	90213-001	CC166EMT																																																																																																																																		
*	90213-002	CC166EMT																																																																																																																																		
*	90213-003	CC166EMT																																																																																																																																		
*	90213-004	CC166EMT																																																																																																																																		
*	90213-005	CC166EMT																																																																																																																																		
*	90214-001	CC166EH																																																																																																																																		
*	90214-003	CC166EH																																																																																																																																		
ORDER 215-506 Combination Control ¾ x ¾, 120 V To Replace																																																																																																																																				
ESSEX PART NO.	CCA PART NO.	MODEL NO.																																																																																																																																		
285-23061-110	90202-016	CC251EM																																																																																																																																		
*	10226-012	CC250EM																																																																																																																																		
*	10226-021	CC250EM																																																																																																																																		
*	10227-015	CC250DE																																																																																																																																		
*	90209-001	CC251DE																																																																																																																																		
288-1202-103	90209-003	CC251DE																																																																																																																																		
*	90221-024	CC251ED																																																																																																																																		
ARKLA AIR CONDITIONING																																																																																																																																				
TO REPLACE	ORDER CATALOG NO.																																																																																																																																			
35691-5	215-104																																																																																																																																			
35691-2	215-101																																																																																																																																			
35691-3	215-102																																																																																																																																			
35691-75	215-202																																																																																																																																			
<table border="1"> <thead> <tr> <th colspan="3">ORDER 215-503 Combination Control ½ x ½, ½ x ¾, 120 V To Replace</th> </tr> <tr> <th>ESSEX PART NO.</th> <th>CCA PART NO.</th> <th>MODEL NO.</th> </tr> </thead> <tbody> <tr><td>286-13101-109</td><td>90203-006</td><td>CC166EM</td></tr> <tr><td>*</td><td>90203-007</td><td>CC166EM</td></tr> <tr><td>286-13101-104</td><td>90203-015</td><td>CC166EM</td></tr> <tr><td>*</td><td>90203-022</td><td>CC166EM</td></tr> <tr><td>*</td><td>90203-031</td><td>CC166EM</td></tr> </tbody> </table>	ORDER 215-503 Combination Control ½ x ½, ½ x ¾, 120 V To Replace			ESSEX PART NO.	CCA PART NO.	MODEL NO.	286-13101-109	90203-006	CC166EM	*	90203-007	CC166EM	286-13101-104	90203-015	CC166EM	*	90203-022	CC166EM	*	90203-031	CC166EM	<table border="1"> <thead> <tr> <th colspan="2">ORDER 215-507 Combination Control ¾ x ¾, 24 V To Replace</th> </tr> <tr> <th>ESSEX PART NO.</th> <th>MODEL NO.</th> </tr> </thead> <tbody> <tr><td>213-445000-1302</td><td>TF-650H</td></tr> <tr><td>213-445000-1303</td><td>TF-650H</td></tr> <tr><td>213-445000-1312</td><td>TF-650H</td></tr> <tr><td>213-441000-1301</td><td>TF-650H</td></tr> <tr><td>213-445000-1305</td><td>TF-650H</td></tr> <tr><td>213-445000-1307</td><td>TF-650HJ</td></tr> <tr><td>213-445000-1309</td><td>TF-650HC</td></tr> </tbody> </table>	ORDER 215-507 Combination Control ¾ x ¾, 24 V To Replace		ESSEX PART NO.	MODEL NO.	213-445000-1302	TF-650H	213-445000-1303	TF-650H	213-445000-1312	TF-650H	213-441000-1301	TF-650H	213-445000-1305	TF-650H	213-445000-1307	TF-650HJ	213-445000-1309	TF-650HC	<table border="1"> <thead> <tr> <th colspan="2">BORG WARNER CORP.</th> </tr> <tr> <th>TO REPLACE</th> <th>ORDER CATALOG NO.</th> </tr> </thead> <tbody> <tr><td>22-1683</td><td>215-201</td></tr> <tr><td>22-1685</td><td>215-103</td></tr> <tr><td>22-1680</td><td>215-302</td></tr> <tr><td>22-1686</td><td>215-101</td></tr> <tr><td>22-1907</td><td>215-304</td></tr> <tr><td>20-2035</td><td>215-303</td></tr> <tr><td>20-2037</td><td>215-304</td></tr> <tr><td>22-1687</td><td>215-102</td></tr> <tr><td>25-14171</td><td>215-502</td></tr> </tbody> </table>	BORG WARNER CORP.		TO REPLACE	ORDER CATALOG NO.	22-1683	215-201	22-1685	215-103	22-1680	215-302	22-1686	215-101	22-1907	215-304	20-2035	215-303	20-2037	215-304	22-1687	215-102	25-14171	215-502																																																																					
ORDER 215-503 Combination Control ½ x ½, ½ x ¾, 120 V To Replace																																																																																																																																				
ESSEX PART NO.	CCA PART NO.	MODEL NO.																																																																																																																																		
286-13101-109	90203-006	CC166EM																																																																																																																																		
*	90203-007	CC166EM																																																																																																																																		
286-13101-104	90203-015	CC166EM																																																																																																																																		
*	90203-022	CC166EM																																																																																																																																		
*	90203-031	CC166EM																																																																																																																																		
ORDER 215-507 Combination Control ¾ x ¾, 24 V To Replace																																																																																																																																				
ESSEX PART NO.	MODEL NO.																																																																																																																																			
213-445000-1302	TF-650H																																																																																																																																			
213-445000-1303	TF-650H																																																																																																																																			
213-445000-1312	TF-650H																																																																																																																																			
213-441000-1301	TF-650H																																																																																																																																			
213-445000-1305	TF-650H																																																																																																																																			
213-445000-1307	TF-650HJ																																																																																																																																			
213-445000-1309	TF-650HC																																																																																																																																			
BORG WARNER CORP.																																																																																																																																				
TO REPLACE	ORDER CATALOG NO.																																																																																																																																			
22-1683	215-201																																																																																																																																			
22-1685	215-103																																																																																																																																			
22-1680	215-302																																																																																																																																			
22-1686	215-101																																																																																																																																			
22-1907	215-304																																																																																																																																			
20-2035	215-303																																																																																																																																			
20-2037	215-304																																																																																																																																			
22-1687	215-102																																																																																																																																			
25-14171	215-502																																																																																																																																			
<table border="1"> <thead> <tr> <th colspan="3">ORDER 215-504 Combination Control ½ x ½, ½ x ¾, 24 V To Replace</th> </tr> <tr> <th>ESSEX PART NO.</th> <th>CCA PART NO.</th> <th>MODEL NO.</th> </tr> </thead> <tbody> <tr><td>285-32052-101</td><td>90202-001</td><td>CC251EM</td></tr> <tr><td>285-32052-105</td><td>90202-003</td><td>CC251EM</td></tr> <tr><td>285-12021-102</td><td>90202-004</td><td>CC251EM</td></tr> <tr><td>285-32011-107</td><td>90202-006</td><td>CC251EM</td></tr> <tr><td>*</td><td>90202-007</td><td>CC251EM</td></tr> <tr><td>285-12021-106</td><td>90202-008</td><td>CC251EM</td></tr> <tr><td>285-12011-108</td><td>90202-011</td><td>CC251EM</td></tr> <tr><td>*</td><td>90202-014</td><td>CC251EM</td></tr> <tr><td>*</td><td>10175-005</td><td>CC250EO</td></tr> <tr><td>*</td><td>10175-012</td><td>CC250EO</td></tr> <tr><td>*</td><td>10226-001</td><td>CC250EM</td></tr> <tr><td>*</td><td>10226-002</td><td>CC250EM</td></tr> <tr><td>*</td><td>10226-003</td><td>CC250EM</td></tr> <tr><td>*</td><td>10226-004</td><td>CC250EM</td></tr> <tr><td>*</td><td>10226-027</td><td>CC250EM</td></tr> <tr><td>*</td><td>10226-030</td><td>CC250EM</td></tr> <tr><td>*</td><td>10226-043</td><td>CC250EM</td></tr> <tr><td>*</td><td>10227-007</td><td>CC250DE</td></tr> </tbody> </table>	ORDER 215-504 Combination Control ½ x ½, ½ x ¾, 24 V To Replace			ESSEX PART NO.	CCA PART NO.	MODEL NO.	285-32052-101	90202-001	CC251EM	285-32052-105	90202-003	CC251EM	285-12021-102	90202-004	CC251EM	285-32011-107	90202-006	CC251EM	*	90202-007	CC251EM	285-12021-106	90202-008	CC251EM	285-12011-108	90202-011	CC251EM	*	90202-014	CC251EM	*	10175-005	CC250EO	*	10175-012	CC250EO	*	10226-001	CC250EM	*	10226-002	CC250EM	*	10226-003	CC250EM	*	10226-004	CC250EM	*	10226-027	CC250EM	*	10226-030	CC250EM	*	10226-043	CC250EM	*	10227-007	CC250DE	<table border="1"> <thead> <tr> <th colspan="2">A. O. SMITH</th> </tr> <tr> <th>TO REPLACE</th> <th>ORDER CATALOG NO.</th> </tr> </thead> <tbody> <tr><td>87700-1</td><td>215-202</td></tr> <tr><td>94481-11</td><td>215-405</td></tr> <tr><td>94482-5</td><td>215-407</td></tr> <tr><td>97479-0</td><td>215-403</td></tr> </tbody> </table>	A. O. SMITH		TO REPLACE	ORDER CATALOG NO.	87700-1	215-202	94481-11	215-405	94482-5	215-407	97479-0	215-403	<table border="1"> <thead> <tr> <th colspan="2">BRYANT MFG. CO.</th> </tr> <tr> <th>TO REPLACE</th> <th>ORDER CATALOG NO.</th> </tr> </thead> <tbody> <tr><td>28563-C1</td><td>215-101</td></tr> <tr><td>28564-C1</td><td>215-102</td></tr> <tr><td>28565-C1</td><td>215-103</td></tr> <tr><td>28566-C1</td><td>215-104</td></tr> <tr><td>34460-C2</td><td>215-302</td></tr> <tr><td>34464-C2</td><td>215-304</td></tr> <tr><td>34464-C4</td><td>215-304</td></tr> <tr><td>34467-C2</td><td>215-305</td></tr> <tr><td>34468-C1</td><td>215-305</td></tr> <tr><td>34469-C1</td><td>215-307</td></tr> <tr><td>34472-C1</td><td>215-308</td></tr> <tr><td>34473-C1</td><td>215-309</td></tr> <tr><td>34476-C1</td><td>215-310</td></tr> <tr><td>34477-C1</td><td>215-311</td></tr> <tr><td>34479-C1</td><td>215-312</td></tr> <tr><td>34487-C2</td><td>215-303</td></tr> <tr><td>23524-D</td><td>215-200</td></tr> <tr><td>23524-D1</td><td>215-201</td></tr> <tr><td>56256-D</td><td>215-314</td></tr> <tr><td>59084-D2</td><td>215-314</td></tr> <tr><td>56256-D8</td><td>215-314</td></tr> <tr><td>59871-D1</td><td>215-314</td></tr> <tr><td>60191-D3</td><td>215-314</td></tr> <tr><td>64376-D1</td><td>215-314</td></tr> <tr><td>56256-D9</td><td>215-314</td></tr> <tr><td>61011-D1</td><td>215-102</td></tr> <tr><td>34464-C6</td><td>215-304</td></tr> </tbody> </table>	BRYANT MFG. CO.		TO REPLACE	ORDER CATALOG NO.	28563-C1	215-101	28564-C1	215-102	28565-C1	215-103	28566-C1	215-104	34460-C2	215-302	34464-C2	215-304	34464-C4	215-304	34467-C2	215-305	34468-C1	215-305	34469-C1	215-307	34472-C1	215-308	34473-C1	215-309	34476-C1	215-310	34477-C1	215-311	34479-C1	215-312	34487-C2	215-303	23524-D	215-200	23524-D1	215-201	56256-D	215-314	59084-D2	215-314	56256-D8	215-314	59871-D1	215-314	60191-D3	215-314	64376-D1	215-314	56256-D9	215-314	61011-D1	215-102	34464-C6	215-304
ORDER 215-504 Combination Control ½ x ½, ½ x ¾, 24 V To Replace																																																																																																																																				
ESSEX PART NO.	CCA PART NO.	MODEL NO.																																																																																																																																		
285-32052-101	90202-001	CC251EM																																																																																																																																		
285-32052-105	90202-003	CC251EM																																																																																																																																		
285-12021-102	90202-004	CC251EM																																																																																																																																		
285-32011-107	90202-006	CC251EM																																																																																																																																		
*	90202-007	CC251EM																																																																																																																																		
285-12021-106	90202-008	CC251EM																																																																																																																																		
285-12011-108	90202-011	CC251EM																																																																																																																																		
*	90202-014	CC251EM																																																																																																																																		
*	10175-005	CC250EO																																																																																																																																		
*	10175-012	CC250EO																																																																																																																																		
*	10226-001	CC250EM																																																																																																																																		
*	10226-002	CC250EM																																																																																																																																		
*	10226-003	CC250EM																																																																																																																																		
*	10226-004	CC250EM																																																																																																																																		
*	10226-027	CC250EM																																																																																																																																		
*	10226-030	CC250EM																																																																																																																																		
*	10226-043	CC250EM																																																																																																																																		
*	10227-007	CC250DE																																																																																																																																		
A. O. SMITH																																																																																																																																				
TO REPLACE	ORDER CATALOG NO.																																																																																																																																			
87700-1	215-202																																																																																																																																			
94481-11	215-405																																																																																																																																			
94482-5	215-407																																																																																																																																			
97479-0	215-403																																																																																																																																			
BRYANT MFG. CO.																																																																																																																																				
TO REPLACE	ORDER CATALOG NO.																																																																																																																																			
28563-C1	215-101																																																																																																																																			
28564-C1	215-102																																																																																																																																			
28565-C1	215-103																																																																																																																																			
28566-C1	215-104																																																																																																																																			
34460-C2	215-302																																																																																																																																			
34464-C2	215-304																																																																																																																																			
34464-C4	215-304																																																																																																																																			
34467-C2	215-305																																																																																																																																			
34468-C1	215-305																																																																																																																																			
34469-C1	215-307																																																																																																																																			
34472-C1	215-308																																																																																																																																			
34473-C1	215-309																																																																																																																																			
34476-C1	215-310																																																																																																																																			
34477-C1	215-311																																																																																																																																			
34479-C1	215-312																																																																																																																																			
34487-C2	215-303																																																																																																																																			
23524-D	215-200																																																																																																																																			
23524-D1	215-201																																																																																																																																			
56256-D	215-314																																																																																																																																			
59084-D2	215-314																																																																																																																																			
56256-D8	215-314																																																																																																																																			
59871-D1	215-314																																																																																																																																			
60191-D3	215-314																																																																																																																																			
64376-D1	215-314																																																																																																																																			
56256-D9	215-314																																																																																																																																			
61011-D1	215-102																																																																																																																																			
34464-C6	215-304																																																																																																																																			
<table border="1"> <thead> <tr> <th colspan="3">ORDER 215-505 Combination Control ¾ x ¾, 24 V To Replace</th> </tr> <tr> <th>ESSEX PART NO.</th> <th>CCA PART NO.</th> <th>MODEL NO.</th> </tr> </thead> <tbody> <tr><td>285-22021-111</td><td>90202-009</td><td>CC251EM</td></tr> <tr><td>*</td><td>90202-010</td><td>CC251EM</td></tr> <tr><td>285-22021-110</td><td>90202-015</td><td>CC251EM</td></tr> <tr><td>285-22021-105</td><td>90202-019</td><td>CC251EM</td></tr> <tr><td>*</td><td>10175-037</td><td>CC250EO</td></tr> <tr><td>*</td><td>10226-006</td><td>CC250EM</td></tr> <tr><td>*</td><td>10227-008</td><td>CC250DE</td></tr> <tr><td>*</td><td>10227-020</td><td>CC250DE</td></tr> <tr><td>*</td><td>90209-002</td><td>CC251DE</td></tr> <tr><td>*</td><td>90221-023</td><td>CC251ED</td></tr> </tbody> </table>	ORDER 215-505 Combination Control ¾ x ¾, 24 V To Replace			ESSEX PART NO.	CCA PART NO.	MODEL NO.	285-22021-111	90202-009	CC251EM	*	90202-010	CC251EM	285-22021-110	90202-015	CC251EM	285-22021-105	90202-019	CC251EM	*	10175-037	CC250EO	*	10226-006	CC250EM	*	10227-008	CC250DE	*	10227-020	CC250DE	*	90209-002	CC251DE	*	90221-023	CC251ED	<table border="1"> <thead> <tr> <th colspan="2">AMERICAN FURNACE CO.</th> </tr> <tr> <th>TO REPLACE</th> <th>ORDER CATALOG NO.</th> </tr> </thead> <tbody> <tr><td>1585-700</td><td>215-501</td></tr> </tbody> </table>	AMERICAN FURNACE CO.		TO REPLACE	ORDER CATALOG NO.	1585-700	215-501	<table border="1"> <thead> <tr> <th colspan="2">CHRYSLER CORP.</th> </tr> <tr> <th>TO REPLACE</th> <th>ORDER CATALOG NO.</th> </tr> </thead> <tbody> <tr><td>1172157</td><td>215-201</td></tr> <tr><td>1422439</td><td>215-101</td></tr> <tr><td>2812866</td><td>215-502</td></tr> <tr><td>2812867</td><td>215-504</td></tr> <tr><td>2775728</td><td>215-100</td></tr> <tr><td>2815422</td><td>215-400</td></tr> </tbody> </table>	CHRYSLER CORP.		TO REPLACE	ORDER CATALOG NO.	1172157	215-201	1422439	215-101	2812866	215-502	2812867	215-504	2775728	215-100	2815422	215-400																																																																								
ORDER 215-505 Combination Control ¾ x ¾, 24 V To Replace																																																																																																																																				
ESSEX PART NO.	CCA PART NO.	MODEL NO.																																																																																																																																		
285-22021-111	90202-009	CC251EM																																																																																																																																		
*	90202-010	CC251EM																																																																																																																																		
285-22021-110	90202-015	CC251EM																																																																																																																																		
285-22021-105	90202-019	CC251EM																																																																																																																																		
*	10175-037	CC250EO																																																																																																																																		
*	10226-006	CC250EM																																																																																																																																		
*	10227-008	CC250DE																																																																																																																																		
*	10227-020	CC250DE																																																																																																																																		
*	90209-002	CC251DE																																																																																																																																		
*	90221-023	CC251ED																																																																																																																																		
AMERICAN FURNACE CO.																																																																																																																																				
TO REPLACE	ORDER CATALOG NO.																																																																																																																																			
1585-700	215-501																																																																																																																																			
CHRYSLER CORP.																																																																																																																																				
TO REPLACE	ORDER CATALOG NO.																																																																																																																																			
1172157	215-201																																																																																																																																			
1422439	215-101																																																																																																																																			
2812866	215-502																																																																																																																																			
2812867	215-504																																																																																																																																			
2775728	215-100																																																																																																																																			
2815422	215-400																																																																																																																																			
<table border="1"> <thead> <tr> <th colspan="3">ORDER 215-505 Combination Control ¾ x ¾, 24 V To Replace</th> </tr> <tr> <th>ESSEX PART NO.</th> <th>CCA PART NO.</th> <th>MODEL NO.</th> </tr> </thead> <tbody> <tr><td>285-22021-111</td><td>90202-009</td><td>CC251EM</td></tr> <tr><td>*</td><td>90202-010</td><td>CC251EM</td></tr> <tr><td>285-22021-110</td><td>90202-015</td><td>CC251EM</td></tr> <tr><td>285-22021-105</td><td>90202-019</td><td>CC251EM</td></tr> <tr><td>*</td><td>10175-037</td><td>CC250EO</td></tr> <tr><td>*</td><td>10226-006</td><td>CC250EM</td></tr> <tr><td>*</td><td>10227-008</td><td>CC250DE</td></tr> <tr><td>*</td><td>10227-020</td><td>CC250DE</td></tr> <tr><td>*</td><td>90209-002</td><td>CC251DE</td></tr> <tr><td>*</td><td>90221-023</td><td>CC251ED</td></tr> </tbody> </table>	ORDER 215-505 Combination Control ¾ x ¾, 24 V To Replace			ESSEX PART NO.	CCA PART NO.	MODEL NO.	285-22021-111	90202-009	CC251EM	*	90202-010	CC251EM	285-22021-110	90202-015	CC251EM	285-22021-105	90202-019	CC251EM	*	10175-037	CC250EO	*	10226-006	CC250EM	*	10227-008	CC250DE	*	10227-020	CC250DE	*	90209-002	CC251DE	*	90221-023	CC251ED	<table border="1"> <thead> <tr> <th colspan="2">AMERICAN STANDARD</th> </tr> <tr> <th>TO REPLACE</th> <th>ORDER CATALOG NO.</th> </tr> </thead> <tbody> <tr><td>6301</td><td>215-303</td></tr> <tr><td>6306</td><td>215-304</td></tr> <tr><td>6335</td><td>215-302</td></tr> <tr><td>21360</td><td>215-302</td></tr> <tr><td>090-5210</td><td>215-101</td></tr> <tr><td>090-5211</td><td>215-102</td></tr> <tr><td>090-55514</td><td>215-202</td></tr> <tr><td>281-510</td><td>215-202</td></tr> </tbody> </table>	AMERICAN STANDARD		TO REPLACE	ORDER CATALOG NO.	6301	215-303	6306	215-304	6335	215-302	21360	215-302	090-5210	215-101	090-5211	215-102	090-55514	215-202	281-510	215-202	<table border="1"> <thead> <tr> <th colspan="2">COLEMAN CO.</th> </tr> <tr> <th>TO REPLACE</th> <th>ORDER CATALOG NO.</th> </tr> </thead> <tbody> <tr><td>2601-126</td><td>215-302</td></tr> <tr><td>6313-225</td><td>215-101</td></tr> <tr><td>8623-209</td><td>215-100</td></tr> <tr><td>53-562</td><td>215-200</td></tr> <tr><td>8616A337</td><td>215-200</td></tr> </tbody> </table>	COLEMAN CO.		TO REPLACE	ORDER CATALOG NO.	2601-126	215-302	6313-225	215-101	8623-209	215-100	53-562	215-200	8616A337	215-200																																																												
ORDER 215-505 Combination Control ¾ x ¾, 24 V To Replace																																																																																																																																				
ESSEX PART NO.	CCA PART NO.	MODEL NO.																																																																																																																																		
285-22021-111	90202-009	CC251EM																																																																																																																																		
*	90202-010	CC251EM																																																																																																																																		
285-22021-110	90202-015	CC251EM																																																																																																																																		
285-22021-105	90202-019	CC251EM																																																																																																																																		
*	10175-037	CC250EO																																																																																																																																		
*	10226-006	CC250EM																																																																																																																																		
*	10227-008	CC250DE																																																																																																																																		
*	10227-020	CC250DE																																																																																																																																		
*	90209-002	CC251DE																																																																																																																																		
*	90221-023	CC251ED																																																																																																																																		
AMERICAN STANDARD																																																																																																																																				
TO REPLACE	ORDER CATALOG NO.																																																																																																																																			
6301	215-303																																																																																																																																			
6306	215-304																																																																																																																																			
6335	215-302																																																																																																																																			
21360	215-302																																																																																																																																			
090-5210	215-101																																																																																																																																			
090-5211	215-102																																																																																																																																			
090-55514	215-202																																																																																																																																			
281-510	215-202																																																																																																																																			
COLEMAN CO.																																																																																																																																				
TO REPLACE	ORDER CATALOG NO.																																																																																																																																			
2601-126	215-302																																																																																																																																			
6313-225	215-101																																																																																																																																			
8623-209	215-100																																																																																																																																			
53-562	215-200																																																																																																																																			
8616A337	215-200																																																																																																																																			
	<p>* Indicates No Part Number For This Control.</p>																																																																																																																																			

Interchange - Essex Replacement Cross Reference

<p>DAY & NIGHT MFG. CO.</p> <table border="1"> <thead> <tr> <th>TO REPLACE</th> <th>ORDER CATALOG NO.</th> </tr> </thead> <tbody> <tr><td>01-0393 A</td><td>215-402</td></tr> <tr><td>01-1902 B</td><td>215-501</td></tr> <tr><td>01-3013</td><td>215-303</td></tr> <tr><td>01-1031</td><td>215-102</td></tr> <tr><td>01-0375</td><td>215-102</td></tr> <tr><td>01-0374</td><td>215-102</td></tr> <tr><td>01-0376</td><td>215-101</td></tr> <tr><td>PS-2044-1</td><td>215-102</td></tr> </tbody> </table>	TO REPLACE	ORDER CATALOG NO.	01-0393 A	215-402	01-1902 B	215-501	01-3013	215-303	01-1031	215-102	01-0375	215-102	01-0374	215-102	01-0376	215-101	PS-2044-1	215-102	<p>GENERAL ELECTRIC CO.</p> <table border="1"> <thead> <tr> <th>TO REPLACE</th> <th>ORDER CATALOG NO.</th> </tr> </thead> <tbody> <tr><td>303221-001</td><td>215-504</td></tr> <tr><td>303221-002</td><td>215-504</td></tr> <tr><td>304336-005</td><td>215-502</td></tr> <tr><td>304336-006</td><td>215-502</td></tr> <tr><td>305142-P04</td><td>215-502</td></tr> <tr><td>305142-P05</td><td>215-502</td></tr> </tbody> </table>	TO REPLACE	ORDER CATALOG NO.	303221-001	215-504	303221-002	215-504	304336-005	215-502	304336-006	215-502	305142-P04	215-502	305142-P05	215-502	<p>LENNOX IND.</p> <table border="1"> <thead> <tr> <th>TO REPLACE</th> <th>ORDER CATALOG NO.</th> </tr> </thead> <tbody> <tr><td>P-3-1124</td><td>215-507</td></tr> <tr><td>P-3-1267</td><td>215-402</td></tr> <tr><td>P-3-1268</td><td>215-501</td></tr> <tr><td>P-3-1270</td><td>215-403</td></tr> <tr><td>P-3-20</td><td>215-102</td></tr> <tr><td>P-3-31</td><td>215-103</td></tr> <tr><td>P-3-53</td><td>215-305</td></tr> <tr><td>P-3-61</td><td>215-306</td></tr> <tr><td>P-3-70</td><td>215-302</td></tr> <tr><td>P-3-79</td><td>215-301</td></tr> <tr><td>P-3-146</td><td>215-303</td></tr> <tr><td>P-3-147</td><td>215-101</td></tr> <tr><td>P-3-330</td><td>215-308</td></tr> <tr><td>P-3-166</td><td>215-104</td></tr> <tr><td>P-3-839</td><td>215-305</td></tr> </tbody> </table>	TO REPLACE	ORDER CATALOG NO.	P-3-1124	215-507	P-3-1267	215-402	P-3-1268	215-501	P-3-1270	215-403	P-3-20	215-102	P-3-31	215-103	P-3-53	215-305	P-3-61	215-306	P-3-70	215-302	P-3-79	215-301	P-3-146	215-303	P-3-147	215-101	P-3-330	215-308	P-3-166	215-104	P-3-839	215-305
TO REPLACE	ORDER CATALOG NO.																																																																	
01-0393 A	215-402																																																																	
01-1902 B	215-501																																																																	
01-3013	215-303																																																																	
01-1031	215-102																																																																	
01-0375	215-102																																																																	
01-0374	215-102																																																																	
01-0376	215-101																																																																	
PS-2044-1	215-102																																																																	
TO REPLACE	ORDER CATALOG NO.																																																																	
303221-001	215-504																																																																	
303221-002	215-504																																																																	
304336-005	215-502																																																																	
304336-006	215-502																																																																	
305142-P04	215-502																																																																	
305142-P05	215-502																																																																	
TO REPLACE	ORDER CATALOG NO.																																																																	
P-3-1124	215-507																																																																	
P-3-1267	215-402																																																																	
P-3-1268	215-501																																																																	
P-3-1270	215-403																																																																	
P-3-20	215-102																																																																	
P-3-31	215-103																																																																	
P-3-53	215-305																																																																	
P-3-61	215-306																																																																	
P-3-70	215-302																																																																	
P-3-79	215-301																																																																	
P-3-146	215-303																																																																	
P-3-147	215-101																																																																	
P-3-330	215-308																																																																	
P-3-166	215-104																																																																	
P-3-839	215-305																																																																	
<p>DUCANE HEATING CORP.</p> <table border="1"> <thead> <tr> <th>TO REPLACE</th> <th>ORDER CATALOG NO.</th> </tr> </thead> <tbody> <tr><td>IBM-984</td><td>215-500</td></tr> <tr><td>IBM-1058</td><td>215-501</td></tr> </tbody> </table>	TO REPLACE	ORDER CATALOG NO.	IBM-984	215-500	IBM-1058	215-501	<p>GENERAL MOTORS</p> <table border="1"> <thead> <tr> <th>TO REPLACE</th> <th>ORDER CATALOG NO.</th> </tr> </thead> <tbody> <tr><td>4920716</td><td>215-103</td></tr> <tr><td>5081011</td><td>215-101</td></tr> </tbody> </table>	TO REPLACE	ORDER CATALOG NO.	4920716	215-103	5081011	215-101																																																					
TO REPLACE	ORDER CATALOG NO.																																																																	
IBM-984	215-500																																																																	
IBM-1058	215-501																																																																	
TO REPLACE	ORDER CATALOG NO.																																																																	
4920716	215-103																																																																	
5081011	215-101																																																																	
<p>DOVER CORP.</p> <table border="1"> <thead> <tr> <th>TO REPLACE</th> <th>ORDER CATALOG NO.</th> </tr> </thead> <tbody> <tr><td>8645</td><td>215-103</td></tr> <tr><td>8677</td><td>215-306</td></tr> </tbody> </table>	TO REPLACE	ORDER CATALOG NO.	8645	215-103	8677	215-306	<p>HAMILTON MFG. CO.</p> <table border="1"> <thead> <tr> <th>TO REPLACE</th> <th>ORDER CATALOG NO.</th> </tr> </thead> <tbody> <tr><td>10-695</td><td>215-301</td></tr> </tbody> </table>	TO REPLACE	ORDER CATALOG NO.	10-695	215-301	<p>LUXAIRE, INC.</p> <table border="1"> <thead> <tr> <th>TO REPLACE</th> <th>ORDER CATALOG NO.</th> </tr> </thead> <tbody> <tr><td>21-0004</td><td>215-100</td></tr> <tr><td>21-0005</td><td>215-201</td></tr> <tr><td>21-0019 L</td><td>215-102</td></tr> <tr><td>21-0011 L</td><td>215-102</td></tr> <tr><td>21-0047</td><td>215-101</td></tr> <tr><td>21-0666</td><td>215-502</td></tr> <tr><td>21-0705</td><td>215-300</td></tr> <tr><td>21-0712</td><td>215-302</td></tr> <tr><td>21-0719</td><td>215-304</td></tr> <tr><td>21-0738</td><td>215-306</td></tr> <tr><td>27-1048</td><td>215-100</td></tr> </tbody> </table>	TO REPLACE	ORDER CATALOG NO.	21-0004	215-100	21-0005	215-201	21-0019 L	215-102	21-0011 L	215-102	21-0047	215-101	21-0666	215-502	21-0705	215-300	21-0712	215-302	21-0719	215-304	21-0738	215-306	27-1048	215-100																														
TO REPLACE	ORDER CATALOG NO.																																																																	
8645	215-103																																																																	
8677	215-306																																																																	
TO REPLACE	ORDER CATALOG NO.																																																																	
10-695	215-301																																																																	
TO REPLACE	ORDER CATALOG NO.																																																																	
21-0004	215-100																																																																	
21-0005	215-201																																																																	
21-0019 L	215-102																																																																	
21-0011 L	215-102																																																																	
21-0047	215-101																																																																	
21-0666	215-502																																																																	
21-0705	215-300																																																																	
21-0712	215-302																																																																	
21-0719	215-304																																																																	
21-0738	215-306																																																																	
27-1048	215-100																																																																	
<p>FENWALL INC.</p> <table border="1"> <thead> <tr> <th>TO REPLACE</th> <th>ORDER CATALOG NO.</th> </tr> </thead> <tbody> <tr><td>1224-A</td><td>215-402</td></tr> <tr><td>1215</td><td>215-403</td></tr> <tr><td>3815</td><td>215-401</td></tr> </tbody> </table>	TO REPLACE	ORDER CATALOG NO.	1224-A	215-402	1215	215-403	3815	215-401	<p>HAMMOND INDUSTRIES</p> <table border="1"> <thead> <tr> <th>TO REPLACE</th> <th>ORDER CATALOG NO.</th> </tr> </thead> <tbody> <tr><td>90097</td><td>215-302</td></tr> <tr><td>90099</td><td>215-101</td></tr> </tbody> </table>	TO REPLACE	ORDER CATALOG NO.	90097	215-302	90099	215-101																																																			
TO REPLACE	ORDER CATALOG NO.																																																																	
1224-A	215-402																																																																	
1215	215-403																																																																	
3815	215-401																																																																	
TO REPLACE	ORDER CATALOG NO.																																																																	
90097	215-302																																																																	
90099	215-101																																																																	
<p>FEDDERS CORP.</p> <table border="1"> <thead> <tr> <th>TO REPLACE</th> <th>ORDER CATALOG NO.</th> </tr> </thead> <tbody> <tr><td>1722-186C1</td><td>215-303</td></tr> </tbody> </table>	TO REPLACE	ORDER CATALOG NO.	1722-186C1	215-303	<p>HARPER WYMAN</p> <table border="1"> <thead> <tr> <th>TO REPLACE</th> <th>ORDER CATALOG NO.</th> </tr> </thead> <tbody> <tr><td>1508A0001</td><td>215-200</td></tr> </tbody> </table>	TO REPLACE	ORDER CATALOG NO.	1508A0001	215-200	<p>MIDLAND ROSS</p> <table border="1"> <thead> <tr> <th>TO REPLACE</th> <th>ORDER CATALOG NO.</th> </tr> </thead> <tbody> <tr><td>05A 82</td><td>215-102</td></tr> <tr><td>42B 66</td><td>215-201</td></tr> <tr><td>A05A 82</td><td>215-103</td></tr> <tr><td>B05A 82</td><td>215-104</td></tr> <tr><td>B37B 22</td><td>215-304</td></tr> <tr><td>C42B 85</td><td>215-306</td></tr> <tr><td>D60B 96</td><td>215-308</td></tr> <tr><td>E05A 82</td><td>215-101</td></tr> <tr><td>E42B 85</td><td>215-305</td></tr> <tr><td>G37B 22</td><td>215-303</td></tr> </tbody> </table>	TO REPLACE	ORDER CATALOG NO.	05A 82	215-102	42B 66	215-201	A05A 82	215-103	B05A 82	215-104	B37B 22	215-304	C42B 85	215-306	D60B 96	215-308	E05A 82	215-101	E42B 85	215-305	G37B 22	215-303																																		
TO REPLACE	ORDER CATALOG NO.																																																																	
1722-186C1	215-303																																																																	
TO REPLACE	ORDER CATALOG NO.																																																																	
1508A0001	215-200																																																																	
TO REPLACE	ORDER CATALOG NO.																																																																	
05A 82	215-102																																																																	
42B 66	215-201																																																																	
A05A 82	215-103																																																																	
B05A 82	215-104																																																																	
B37B 22	215-304																																																																	
C42B 85	215-306																																																																	
D60B 96	215-308																																																																	
E05A 82	215-101																																																																	
E42B 85	215-305																																																																	
G37B 22	215-303																																																																	
<p>FRASER & JOHNSTON</p> <table border="1"> <thead> <tr> <th>TO REPLACE</th> <th>ORDER CATALOG NO.</th> </tr> </thead> <tbody> <tr><td>153-0001</td><td>215-202</td></tr> <tr><td>153-0002</td><td>215-201</td></tr> <tr><td>153-0004</td><td>215-101</td></tr> <tr><td>154-0006</td><td>215-305</td></tr> <tr><td>155-0007</td><td>215-306</td></tr> <tr><td>154-0008</td><td>215-308</td></tr> <tr><td>154-0012</td><td>215-314</td></tr> <tr><td>154-0002</td><td>215-303</td></tr> </tbody> </table>	TO REPLACE	ORDER CATALOG NO.	153-0001	215-202	153-0002	215-201	153-0004	215-101	154-0006	215-305	155-0007	215-306	154-0008	215-308	154-0012	215-314	154-0002	215-303	<p>HUPP CORP.</p> <table border="1"> <thead> <tr> <th>TO REPLACE</th> <th>ORDER CATALOG NO.</th> </tr> </thead> <tbody> <tr><td>A40351-G2</td><td>215-100</td></tr> <tr><td>A40351-G1</td><td>215-100</td></tr> <tr><td>A46394-G1</td><td>215-100</td></tr> <tr><td>C3763-G7</td><td>215-101</td></tr> <tr><td>A40374-G1</td><td>215-201</td></tr> <tr><td>A40374-G3</td><td>215-200</td></tr> </tbody> </table>	TO REPLACE	ORDER CATALOG NO.	A40351-G2	215-100	A40351-G1	215-100	A46394-G1	215-100	C3763-G7	215-101	A40374-G1	215-201	A40374-G3	215-200																																	
TO REPLACE	ORDER CATALOG NO.																																																																	
153-0001	215-202																																																																	
153-0002	215-201																																																																	
153-0004	215-101																																																																	
154-0006	215-305																																																																	
155-0007	215-306																																																																	
154-0008	215-308																																																																	
154-0012	215-314																																																																	
154-0002	215-303																																																																	
TO REPLACE	ORDER CATALOG NO.																																																																	
A40351-G2	215-100																																																																	
A40351-G1	215-100																																																																	
A46394-G1	215-100																																																																	
C3763-G7	215-101																																																																	
A40374-G1	215-201																																																																	
A40374-G3	215-200																																																																	
<p>GAFFERS & SATTLER</p> <table border="1"> <thead> <tr> <th>TO REPLACE</th> <th>ORDER CATALOG NO.</th> </tr> </thead> <tbody> <tr><td>997-188</td><td>215-501</td></tr> <tr><td>997-418</td><td>215-101</td></tr> <tr><td>997-420</td><td>215-102</td></tr> </tbody> </table>	TO REPLACE	ORDER CATALOG NO.	997-188	215-501	997-418	215-101	997-420	215-102	<p>JOHNSON CORP.</p> <table border="1"> <thead> <tr> <th>TO REPLACE</th> <th>ORDER CATALOG NO.</th> </tr> </thead> <tbody> <tr><td>2274-B1</td><td>215-400</td></tr> <tr><td>2274-B3</td><td>215-507</td></tr> <tr><td>2274-B6</td><td>215-500</td></tr> <tr><td>2274-B10</td><td>215-500</td></tr> <tr><td>2274-B11</td><td>215-507</td></tr> <tr><td>1112-A9</td><td>215-305</td></tr> </tbody> </table>	TO REPLACE	ORDER CATALOG NO.	2274-B1	215-400	2274-B3	215-507	2274-B6	215-500	2274-B10	215-500	2274-B11	215-507	1112-A9	215-305	<p>MODINE MFG.</p> <table border="1"> <thead> <tr> <th>TO REPLACE</th> <th>ORDER CATALOG NO.</th> </tr> </thead> <tbody> <tr><td>5H-65492</td><td>215-406</td></tr> <tr><td>5H-67596</td><td>215-404</td></tr> <tr><td>5H-65508</td><td>215-407</td></tr> <tr><td>5H-65493</td><td>215-306</td></tr> <tr><td>5H-65704</td><td>215-503</td></tr> <tr><td>5H-65705</td><td>215-506</td></tr> <tr><td>5H-66000</td><td>215-502</td></tr> <tr><td>5H-66001</td><td>215-505</td></tr> <tr><td>5H-66416</td><td>215-102</td></tr> <tr><td>5H-66417</td><td>215-103</td></tr> <tr><td>5H-66415</td><td>215-101</td></tr> </tbody> </table>	TO REPLACE	ORDER CATALOG NO.	5H-65492	215-406	5H-67596	215-404	5H-65508	215-407	5H-65493	215-306	5H-65704	215-503	5H-65705	215-506	5H-66000	215-502	5H-66001	215-505	5H-66416	215-102	5H-66417	215-103	5H-66415	215-101																		
TO REPLACE	ORDER CATALOG NO.																																																																	
997-188	215-501																																																																	
997-418	215-101																																																																	
997-420	215-102																																																																	
TO REPLACE	ORDER CATALOG NO.																																																																	
2274-B1	215-400																																																																	
2274-B3	215-507																																																																	
2274-B6	215-500																																																																	
2274-B10	215-500																																																																	
2274-B11	215-507																																																																	
1112-A9	215-305																																																																	
TO REPLACE	ORDER CATALOG NO.																																																																	
5H-65492	215-406																																																																	
5H-67596	215-404																																																																	
5H-65508	215-407																																																																	
5H-65493	215-306																																																																	
5H-65704	215-503																																																																	
5H-65705	215-506																																																																	
5H-66000	215-502																																																																	
5H-66001	215-505																																																																	
5H-66416	215-102																																																																	
5H-66417	215-103																																																																	
5H-66415	215-101																																																																	
<p>GAS FIRED PRODUCTS</p> <table border="1"> <thead> <tr> <th>TO REPLACE</th> <th>ORDER CATALOG NO.</th> </tr> </thead> <tbody> <tr><td>3058-2</td><td>215-101</td></tr> <tr><td>3058-6</td><td>215-101</td></tr> <tr><td>3058-4</td><td>215-103</td></tr> </tbody> </table>	TO REPLACE	ORDER CATALOG NO.	3058-2	215-101	3058-6	215-101	3058-4	215-103	<p>LEAR SIEGLER, INC.</p> <table border="1"> <thead> <tr> <th>TO REPLACE</th> <th>ORDER CATALOG NO.</th> </tr> </thead> <tbody> <tr><td>G-434</td><td>215-314</td></tr> <tr><td>G-352</td><td>215-401</td></tr> <tr><td>G-350</td><td>215-402</td></tr> <tr><td>G-431</td><td>215-500</td></tr> <tr><td>G-522</td><td>215-501</td></tr> <tr><td>703081</td><td>215-501</td></tr> </tbody> </table>	TO REPLACE	ORDER CATALOG NO.	G-434	215-314	G-352	215-401	G-350	215-402	G-431	215-500	G-522	215-501	703081	215-501	<p>MUELLER CLIMATROL</p> <table border="1"> <thead> <tr> <th>TO REPLACE</th> <th>ORDER CATALOG NO.</th> </tr> </thead> <tbody> <tr><td>11-5872</td><td>215-200</td></tr> <tr><td>32-0925</td><td>215-101</td></tr> <tr><td>42-0925</td><td>215-102</td></tr> <tr><td>52-0925</td><td>215-103</td></tr> <tr><td>71-5040</td><td>215-306</td></tr> </tbody> </table>	TO REPLACE	ORDER CATALOG NO.	11-5872	215-200	32-0925	215-101	42-0925	215-102	52-0925	215-103	71-5040	215-306																														
TO REPLACE	ORDER CATALOG NO.																																																																	
3058-2	215-101																																																																	
3058-6	215-101																																																																	
3058-4	215-103																																																																	
TO REPLACE	ORDER CATALOG NO.																																																																	
G-434	215-314																																																																	
G-352	215-401																																																																	
G-350	215-402																																																																	
G-431	215-500																																																																	
G-522	215-501																																																																	
703081	215-501																																																																	
TO REPLACE	ORDER CATALOG NO.																																																																	
11-5872	215-200																																																																	
32-0925	215-101																																																																	
42-0925	215-102																																																																	
52-0925	215-103																																																																	
71-5040	215-306																																																																	

Interchange — Essex Replacement Cross Reference

PERFECTION PRODUCTS		HONEYWELL		TO REPLACE ORDER CATALOG NO.	
TO REPLACE	ORDER CATALOG NO.	TO REPLACE	ORDER CATALOG NO.	TO REPLACE	ORDER CATALOG NO.
A105489-G1	215-501	V48A1658	215-405	H91GA-01	215-405
PRESSURE VESSELS		V48A1666	215-407	H91GA-02	215-405
TO REPLACE	ORDER CATALOG NO.	V48A1674	215-409	H91GG-05	215-404
L419	215-102	V48A1682	215-411	H91HA-02	215-407
L422	215-103	V88A1357	215-406	H91HG-02	215-406
L424	215-104	V88A1345	215-408	91F3A1	215-401
PYRONICS		V88A1352	215-410	91F3A2	215-401
TO REPLACE	ORDER CATALOG NO.	V88A1394	215-404	91F3A9	215-401
1393-B1	215-300	V4046C1054	215-401	91F3G8	215-400
1393-B3	215-301	V4202A1033	215-405	91F3G18	215-400
1393-B13	215-301	V8135A1010	215-504	91F21A26	215-401
2334-C2	215-103	V8139A1032	215-504	91F21A33	215-401
RHEEM MFG. CO.		V8146A1033	215-504	91F21A35	215-401
TO REPLACE	ORDER CATALOG NO.	V8202A1034	215-404	91F21G18	215-400
AP-15155	215-501	ITT - GENERAL		91FM21A1	215-401
AP-15182	215-500	TO REPLACE	ORDER CATALOG NO.	91FM21G1	215-400
AP-4564	215-200	B50LC451	215-404	91FQ3A2	215-401
AP-4321	215-101	B50LC461	215-406	91FQ3A17	215-401
SUBURBAN MFG. CO.		B57RB25	215-504	91H21G18	215-400
TO REPLACE	ORDER CATALOG NO.	B57RB68	215-504	91S5A26	215-405
160525	215-401	B57RF58	215-507	91S5G18	215-404
160526	215-400	B59R02	215-504	91S6A26	215-407
SOUTH BEND RANGE		K3A452	215-405	91S6G18	215-406
TO REPLACE	ORDER CATALOG NO.	K3A461	215-406	91SM5A1	215-405
15771	215-101	K3A462	215-407	91SM5G1	215-404
12864	215-102	K40AC251B	215-404	91SM6A1	215-407
TRANE CO.		K40AC252B	215-405	91SM6G1	215-406
TO REPLACE	ORDER CATALOG NO.	K40AC351B	215-404	91XM5A1	215-405
13110144	215-400	K40AC352B	215-405	91XM5G1	215-404
13110183	215-500	K40AC261B	215-406	91XM6A1	215-407
140-47100	215-103	K40AC262B	215-407	91XM6G1	215-406
150-24000	215-302	K47RB03	215-502	925H13	215-401
150-47200	215-200	K47RB05	215-503	925H16	215-405
150-48900	215-101	PENN - BASO		925L13	215-400
150-49000	215-102	TO REPLACE	ORDER CATALOG NO.	925L16	215-404
151-00012	215-305	EA411-5	215-405	926H13	215-401
151-01900	215-200	EA451-5	215-404	926H16	215-405
WILLIAMSON CO.		EAM411-19	215-405	926L13	215-400
TO REPLACE	ORDER CATALOG NO.	EAM451-19	215-404	926L16	215-404
18-034	215-302	GF3A2	215-401	93D1204G4	215-504
18-036	215-303	GF3A9	215-401	G93AGB-001	215-504
22-064	215-201	GF3G8	215-400	ROBERTSHAW	
22-031	215-101	GF21A26	215-401	TO REPLACE	ORDER CATALOG NO.
		GF21A33	215-401	1000ER	215-502
		GF21A35	215-401	1200BER	215-504
		GF21G18	215-400	7000BER	215-504
		GFQ3A17	215-401	VH700-402	215-504
		H90GA-02	215-405	VH1000-402	215-502
		H90GG-02	215-404	VH1200-402	215-504
		H90HA-02	215-407	WHITE - RODGERS	
		H90HG-02	215-406	TO REPLACE	ORDER CATALOG NO.
		H90NA-01	215-401	2509-256	215-404
		H90NG-01	215-400	2509A-256	215-405
		H90SA-01	215-407	2509-258	215-406
		H90SG-01	215-406	2509A-258	215-407
		H90TA-01	215-405	25G01-286	215-404
		H90TG-01	215-404	25G01A-306	215-405
		H91CA-02	215-401	25G01-288	215-406
		H91CA-05	215-401	25G01A-308	215-407
		H91CA-08	215-401	26A05-256	215-404
		H91CA-10	215-401	26A05-258	215-406
		H91CG-03	215-400	2647-103	215-408
		H91CK-04	215-400	2647-104	215-410
				3661-628	215-504
				3661-668	215-504



*distributed
nationally
through*
**AUTHORIZED
WHOLESALEERS**

**FOR IMMEDIATE DELIVERY . . .
call your
IWI / Steveco Representative or
mail your orders to your
IWI / Steveco Service Center
listed below . . .**

ATLANTA, GEORGIA

1806 Plymouth Road, N.W.
Atlanta, Georgia 30325
404/355-5171

DETROIT, MICHIGAN

6233 Concord Avenue
Detroit, Michigan 48211

FORT WAYNE, INDIANA*

1510 Wall Street
Fort Wayne, Indiana 46804
219/742-7441

HACKENSACK, NEW JERSEY

P. O. Box 2364
Hackensack, New Jersey 07602
201/487-9222

LOS ANGELES, CALIFORNIA

777 South Mission Road
Los Angeles, California 90023
213/264-7006

ST. LOUIS, MISSOURI

4343 Duncan Avenue
St. Louis, Missouri 63110
314/371-2616

DALLAS, TEXAS

2801 Pierce Avenue
Dallas, Texas 75233
214/339-1286

* National Headquarters
for IWI Division of
ESSEX International, Inc.

Steveco

**The Nation's Largest Distributor of controls, capacitors,
gas controls, small motors and associated devices and
accessories for the air conditioning, refrigeration, heating
and appliance industries.**