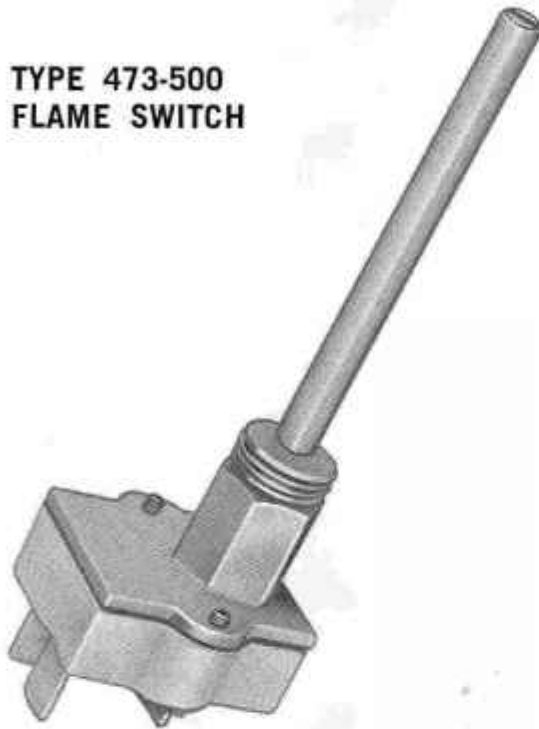


**ESSEX**

Stemco thermostats



### TYPE 473-500 FLAME SWITCH



## STEMCO GAS CONTROLS APPLICATION

The Type 473-500 flame switch is designed to be used with electric ignition on furnaces, clothes dryers, heaters and other gas and oil burning appliances. This unit can readily be adapted to almost any type of pilot burner and calibrated in an operating temperature range from 301°F. to 700°F. It is available only in the SPDT construction to either open or close the circuit on a temperature rise. FOR BEST PERFORMANCE, FLAME SHOULD IMPINGE ON PROBE AT LEAST 3/4" FROM TIP. For a SPST construction — please refer to Bulletin 471-500.

## ELECTRICAL RATINGS

The ratings should be reviewed with the factory — as they may be increased or decreased, depending upon the type of circuit in which the flame switch is used. A normal resistive rating of 3 amperes for 5,000 cycles 120 volts, 1.0 amp @ 12/24/120 volts amperes 25,000 cycles 120 volts and 1.0 amps @ 12/24/120 volts amperes 25,000 cycles 12 VDC apply. These are the factory recommended ratings. This product is AGA tested.

## STYLES

The 473-500 flame switch is normally furnished with 1/4" or 3/16" male quick connect terminals. Lead wires can be welded to the standard 3/16" quick connect terminal if so desired. Normally a, 200°C. wire is used. The standard "A" dimension lengths are — 2-29/32 and 3-29/32. A standard 3/16 dia. tube is furnished with either length.

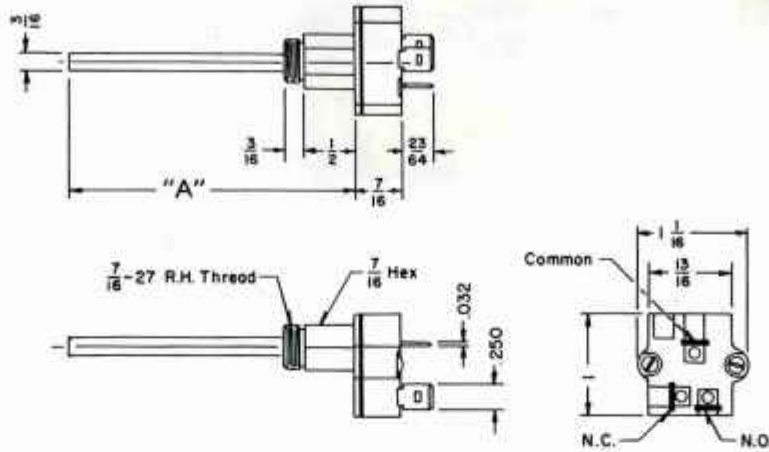
For a tube of any other length, please refer to the factory for approval and a possible tooling cost.



**ESSEX INTERNATIONAL, INC.,** CONTROLS DIVISION, P.O. Box 1007, Mansfield, Ohio 44903

Canada: Stevens Controls Ltd., 20 Arthur Ave. East, Renfrew, Ontario  
England: Northampton House, Solihull, Phone: (021) 704-9555

# MOUNTING



The thread which is shown above is the only standard one available. Refer to the factory for special brackets or threads for approval and possible tooling costs.

## RANGE AND TOLERANCE

The Type 473-500 is calibrated at the factory to the tolerances shown below. Even though the probe could withstand temperatures of 1400°F. (and the body 650°F.) the maximum calibration temperature

is 700°F. Normally, the adjusting screw is locked tightly, but on special requests could be left free for the customers calibration.

TEMPERATURE RANGE	TOLERANCE
301°F. - 600°F.	±25°F.
601°F. - 700°F.	±50°F.

## SAMPLES and ORDERING INFORMATION

When requesting samples and quotations it is often best that a sample of the pilot burner, which is going to be used along with this flame switch, be forwarded to the factory. Also, the operating times to drop out the electric ignition and to close the main electrical circuit should also be furnished. If this is going to be used along with an electrical igniter a sample should be furnished so that we can check the actual application in our labs. If this is not feasible we would like to have the following information: Current, voltage, type, cycle life, ambient temperatures of the probe and body, the "A" dimension, the differential, and use. Also, we would like to know the ordering quantity and probable yearly volume so that we can quote your production needs.



**ESSEX INTERNATIONAL, INC.**  
 CONTROLS DIVISION, P.O. Box 1007, Mansfield, Ohio 44903  
 Canada: Stevens Controls Ltd., 20 Arthur Ave. East, Renfrew, Ontario  
 England: Northampton House, Solihull, Phone: (021) 704-9555